

Release Notes

PrimeTerminal Professional 2.7

Release 01/06/2010

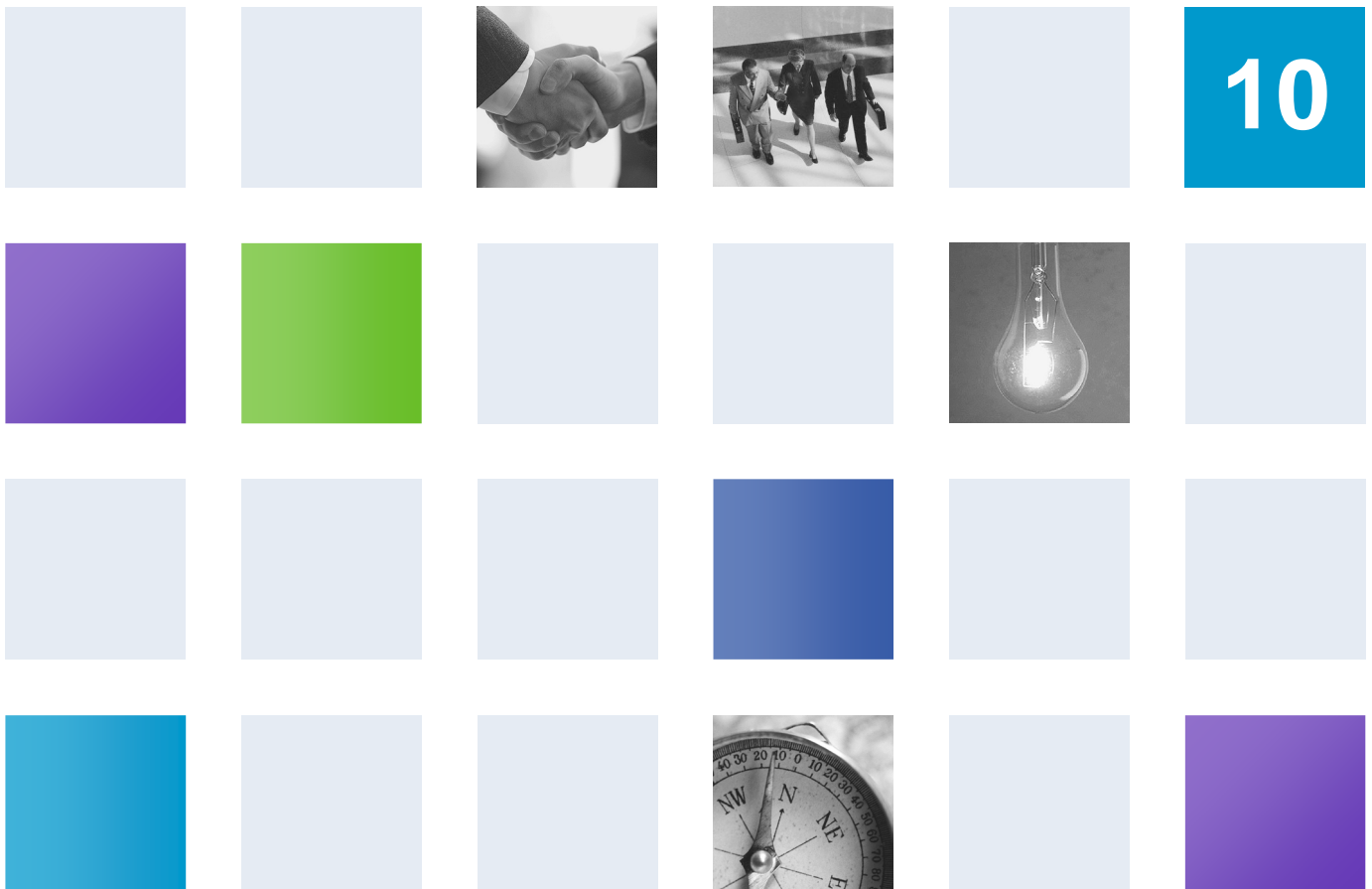


Table of Contents

1	Preface	3
2	Top New Content and Functionality	4
3	New Content & Visualization Enhancements	6
3.1	Funds Data	6
3.1.1	Enhanced: Morningstar™ Funds Historic Data (Subscription Only)	6
3.2	Exchange Data	6
3.2.1	New: OMX Broker Codes in Times & Sales Clip (All)	6
3.2.2	New: Oslo Stock Exchange Full Order Book (Subscription Only)	7
3.3	Enhanced: Option Chain (All)	7
3.3.1	Number of Option Classes	7
3.3.2	Default Exchange → Default Option Class	7
4	Functionality and Usability Enhancements	8
4.1	New: Portfolio: Transaction View (All)	8
4.2	Usability: MyScreens Menu and Toolbar (All)	10
4.3	Usability: MyLists Menu and Toolbar (All)	11
4.3.1	MyLists & Portfolios Settings	12
4.3.2	Configure MyList/Portfolio	13
4.4	Usability: Default currency in the All Markets Clip (All)	13
4.5	Usability: Tool Tip in List Clip (All)	14
4.6	Usability: Column Preset also in Screener Results (All)	14
4.7	Interactive Charts (Advisor: all, Basic: subscription only)	15
4.7.1	Enhanced: Mail sender	15
4.7.2	New: Digits Adjusted to PrimeTerminal settings	15
5	Service	16
5.1	Enhanced: Help Menu (All)	16
5.2	New: Entitlements view (All)	16
6	Technical	17
6.1	Improved: Loading Time (All)	17
7	Fixes	17

1 Preface

This document outlines all changes compared to PrimeTerminal Professional 2.6.

All documented changes apply to PrimeTerminal Professional Basic and Advisor. The information in brackets indicates if a change is available and relevant on specific content or news subscription basis only (“subscription only”) or to all users (“all”).

All screenshots are examples for illustrating purposes only. The exact layout and display may vary depending on the supplied PrimeTerminal in each case of customization.

The information contained in this document shall not be deemed as financial advice, consultancy or express warranty or warranty of fitness for a special purpose. Interactive Data Managed Solutions will not be liable for any inaccuracy or incompleteness of the information or data supplied with this document.

This document contains confidential information and is provided exclusively for the information of the recipients. It may not be copied or distributed to any third party.

Release Notes Usage Notes

Bold blue words refer to menu options and settings that you see in your PrimeTerminal user interface.

Bold black words are used for emphasis in the text.

➡ Points to cross references in this manual which are followed by the chapter number and headline. They are enhanced by direct links in electronic versions of this document.

2 Top New Content and Functionality

We are pleased to announce a new release of PrimeTerminal Professional, our customizable, easy-to-use financial market terminal.

This release focuses mainly on the continuous enhancement of PrimeTerminal's portfolio capabilities by the new Transactions view, exchange and fund data content enhancements and key usability improvements.

The top enhancements of the new version are

New Content and Visualization Enhancements

New: Morningstar™ Funds History

For Morningstar™ NAV's, the historic data displayed in Interactive Charts and in the PrimeTerminal Chart Clip in a performance chart is now sourced from Morningstar™ Reinvested Investment Prices.

New: OMX Buy/Sell Broker Codes

OMX Buy/Sell Broker Codes are now also available for the Times & Sales Clip.

New: Oslo Stock Exchange Full Order Book

Oslo Stock Exchange RTL2 data is now visualized in a Full Order Book display (already available in patch 2.6.0.0.25)

New and Enhanced Functionality

New: MyLists & Portfolios

Transaction views are now available on portfolio or on single position level. Transactions can be filtered by position, by security type and by date

Usability Improvements

MyScreens menu and toolbar

The MyScreens menu and toolbar has been enhanced and re-organized.

MyList

"MyList" has been renamed "MyList/Portfolio" in all related GUI elements to directly guide the user to the Portfolio capabilities of PrimeTerminal. The menu has been re-organized. Furthermore, the user can now better personalize his view of MyLists or Portfolios by for example allocating Column Presets to the MyList or Portfolio. A Settings dialog has been introduced to allow for initial settings, such as for example the default Column Preset.

All Markets

The default currency used for converting of all quote data in the All Markets Clip can now be set in a new settings dialog.

List Clip Tool Tips

For data that is not fully visible (as the column in the List Clip is not wide enough), tool tips showing the full data when the cursor is moved over the relevant content have been implemented.

Service**New: Enhanced Help Menu**

The release notes and further documents such as Tutorial and Technical Guide, all available in the client area of www.primeterminal-ms.com, can now also be accessed via direct links from the Help menu.

New: Entitlements view

The Entitlements view provides an overview all content and functionality packages that the user has access to.

3 New Content & Visualization Enhancements

3.1 Funds Data

3.1.1 Enhanced: Morningstar™ Funds Historic Data (Subscription Only)

For Morningstar™ NAV's, the historic data displayed in **Interactive Charts** and in the **PrimeTerminal Chart Clip** in a performance chart is now sourced from Morningstar™ Reinvested Investment Prices.



3.2 Exchange Data

3.2.1 New: OMX Broker Codes in Times & Sales Clip (All)

The OMX Broker Codes are now also available in the **Times & Sales Clip**.

WILLIAM DEMANT HOLDING AS DKK1.00...					
ISIN: DK0010268440			Exchange: OMX Copenhagen		
Start Time	14:40:59	End Time	14:53:37		
High	427.9	Low	426.5		
High Time	14:51:42	Low Time	14:40:59		
Advanced	6	Declined	12		
Net chg.	+1.00	Chg %	+0.23%		
Qty.	50	VWAP	427.18748		
Last Time & Date	Trade	Volume	OMX Buy...	OMX Sell...	
14:53:37 27.05.10	427.50	101	ABC	SGP	
14:51:42 27.05.10	427.90	10	ABC	SGP	
14:51:42 27.05.10	427.90	3	DBL	SGP	
14:51:42 27.05.10	427.90	105	DBL	MSI	
14:51:18 27.05.10	427.80	54	ABC	NIP	
14:51:18 27.05.10	427.80	147	DBL	NIP	
14:49:41 27.05.10	427.60	68	CDG	UBS	
14:49:38 27.05.10	427.40	100	CDG	LCM	
14:49:37 27.05.10	427.20	41	DBL	MSI	

3.2.2 New: Oslo Stock Exchange Full Order Book (Subscription Only)

For Oslo Stock Exchange RTL L2, a Full Order Book is now available.

(already available in patch 2.6.0.0.25).

FRONTLINE LTD COM USD2.50 (Oslo Level II)

Inst code: FRO Bid: 206.00 High: 206.90 Exchange: Oslo Stock Exchange
 Last: 206.20 Ask: 206.60 Low: 195.31 Last Time: 15:24:59



Time	Bid size	Bid	Ask	Ask size	Time
15:24:29	64	206.00	206.60	708	15:16:19
15:24:59	120	206.00	206.70	278	15:24:25
15:23:37	398	205.90	207.00	200	06:00:03
15:24:59	500	205.90	207.00	800	12:36:13
15:24:32	1	205.80	207.00	200	12:52:35
15:25:01	100	205.80	207.00	50	15:11:01
15:25:19	1,200	205.60	207.00	1,000	15:25:18
15:22:49	1,347	205.50	207.10	1,277	15:22:44
15:24:57	322	205.30	207.10	200	15:24:53
15:24:04	249	205.20	207.10	1,200	15:25:20
15:24:57	322	205.00	207.40	322	15:24:57
15:24:58	2,899	205.00	207.50	300	15:16:34
15:24:00	200	204.90	207.50	2,966	15:23:37
15:21:49	244	204.80	207.70	221	15:22:44
15:01:14	366	204.50	207.70	322	15:24:57
15:23:05	229	204.30	207.90	213	15:19:05
15:14:29	210	204.10	208.00	1,000	09:06:08

3.3 Enhanced: Option Chain (All)

3.3.1 Number of Option Classes

The number of supported option classes has been enlarged to 50.

3.3.2 Default Exchange → Default Option Class

The user can set the default exchange in the Option Chain Clip settings dialog. Now the option class with the highest number of options at the default exchange is used when starting the Option Chain Clip.

4 Functionality and Usability Enhancements

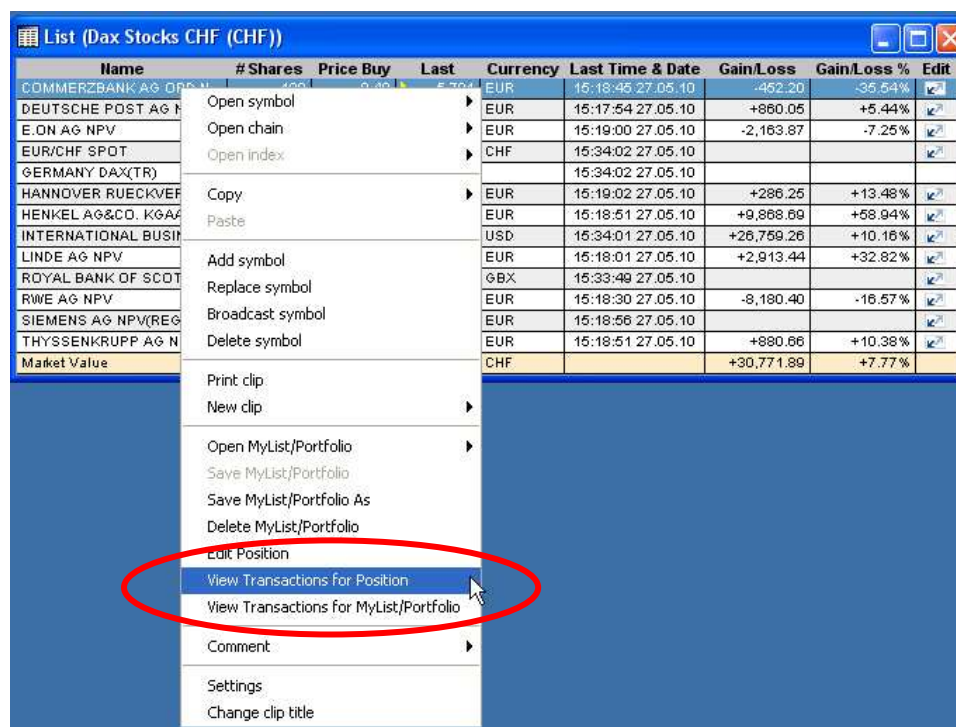
4.1 New: Portfolio: Transaction View (All)

To review the transactions for any given position or portfolio, transaction views are now available. They can be called via the following right mouse context menus.

View Transaction for Position → calls the transaction view for the selected position (this menu is only available if a position has been selected)

View Transaction for MyList/Portfolio → calls the transaction view for the full portfolio.

The menus are only available if the **MyList/Portfolio** is displayed as List.



Both the portfolio and the position based view are providing key statistics for the portfolio, such as

- Portfolio name
- Base currency
- Gain/Loss
- Gain/Loss %
- Date last transaction
- Number (#) of positions
- Number(#) of transactions

Number(#) of watch positions (without transactions)

The list is by default sorted by date descending. By default, start and end date are pre-filled with the date of the first and the last transaction, either of the full portfolio or of the chosen position.

Portfolio based view:

Transactions can be filtered by position, by security type and by date.

All Transactions (Dax Stocks CHF (CHF))

Dax Stocks CHF

Gain/Loss

+30,104.34

Gain/Loss %

+7.60%

Last Transaction

01.02.2010

Base Currency

CHF

Positions

13

Transactions

24

Watch Positions

4

Position

All

From

15.06.2009

To

01.02.2010

Security Type

All

Date	Name	ISIN	Type	# Shares	Fees	Price Buy	Value Buy	FX Buy	Currency	Exchange	Security type
01.02.2010	INTERNATIONAL BUSINESS MACHINES	US4592001014	Buy	1,000	50.00	124.67	124,670...	1.0566	USD	NYSE	Stock
01.02.2010	INTERNATIONAL BUSINESS MACHINES	US4592001014	Buy	1,000	50.00	124.67	124,670...	1.0566	USD	NYSE	Stock
15.09.2009	GERMANY(FEDERAL REPUBLIC) 5% TSY BDS 4/7/12 EURO.01	DE0001135200	Sell	0	0.00	108.93	0.00	1.5161	EUR	Frankfurt	Bond
10.09.2009	COMMERZBANK AG ORD NPV	DE0008032004	Buy	100	0.00	8.40	840.00	1.5147	EUR	Xetra	Stock
31.08.2009	GERMANY(FEDERAL REPUBLIC) 5% TSY BDS 4/7/12 EURO.01	DE0001135200	Sell	0	0.00	108.65	0.00	1.5162	EUR	Frankfurt	Bond
31.08.2009	GERMANY(FEDERAL REPUBLIC) 5% TSY BDS 4/7/12 EURO.01	DE0001135200	Sell	100	0.00	108.65	10,865.00	1.5162	EUR	Frankfurt	Bond
31.08.2009	GERMANY(FEDERAL REPUBLIC) 5% TSY BDS 4/7/12 EURO.01	DE0001135200	Buy	100	0.00	108.65	10,865.00	1.5161	EUR	Frankfurt	Bond
31.08.2009	GERMANY(FEDERAL REPUBLIC) 5% TSY BDS 4/7/12 EURO.01	DE0001135200	Sell	123	0.00	108.65	13,363.95	1.5163	EUR	Frankfurt	Bond
31.08.2009	GERMANY(FEDERAL REPUBLIC) 5% TSY BDS 4/7/12 EURO.01	DE0001135200	Buy	123	0.00	108.65	13,363.95	1.5162	EUR	Frankfurt	Bond
31.08.2009	GERMANY(FEDERAL REPUBLIC) 5% TSY BDS 4/7/12 EURO.01	DE0001135200	Sell	123,4567	0.00	108.65	13,413.57	1.5163	EUR	Frankfurt	Bond
31.08.2009	GERMANY(FEDERAL REPUBLIC) 5% TSY BDS 4/7/12 EURO.01	DE0001135200	Sell	0	0.00	108.65	0.00	1.5162	EUR	Frankfurt	Bond
31.08.2009	GERMANY(FEDERAL REPUBLIC) 5% TSY BDS 4/7/12 EURO.01	DE0001135200	Sell	0	0.00	108.65	0.00	1.5172	EUR	Frankfurt	Bond
31.08.2009	GERMANY(FEDERAL REPUBLIC) 5% TSY BDS 4/7/12 EURO.01	DE0001135200	Buy	123,4567	0.00	108.65	13,413.57	1.5168	EUR	Frankfurt	Bond
27.08.2009	DEUTSCHE LUFTHANSA AG ORD NPV (REGD)(VINI)	DE0008232125	Sell	100	30.00	11.14	1,113.50	1.5188	EUR	Xetra	Stock
27.08.2009	DEUTSCHE LUFTHANSA AG ORD NPV (REGD)(VINI)	DE0008232125	Sell	100	30.00	11.14	1,113.50	1.5188	EUR	Xetra	Stock
25.08.2009	DEUTSCHE LUFTHANSA AG ORD NPV (REGD)(VINI)	DE0008232125	Buy	100	30.00	11.30	1,130.00	1.5173	EUR	Xetra	Stock
24.08.2009	DEUTSCHE LUFTHANSA AG ORD NPV (REGD)(VINI)	DE0008232125	Buy	100	35.00	11.16	1,116.50	1.5177	EUR	Xetra	Stock
03.08.2009	HANNOVER RUECKVERSICHERUNG AG ORD NPV(REGD)	DE0008402215	Buy	50	30.00	27.83	1,391.50	1.5266	EUR	Xetra	Stock
27.07.2009	DEUTSCHE POST AG NPV(REGD)	DE0005552004	Buy	1,000	30.00	10.38	10,380.00	1.5243	EUR	Xetra	Stock
21.07.2009	RWE AG NPV	DE0007037129	Buy	500	30.00	65.12	32,560.00	1.5163	EUR	Xetra	Stock
20.07.2009	E.ON AG NPV	DE0005460000	Buy	800	30.00	24.54	19,632.00	1.5193	EUR	Xetra	Stock
20.07.2009	THYSSENKRUPP AG NPV	DE0007500001	Buy	300	30.00	18.62	5,586.00	1.5193	EUR	Xetra	Stock
13.07.2009	LINDE AG NPV	DE0005483001	Buy	100	30.00	58.64	5,864.00	1.5136	EUR	Xetra	Stock
15.06.2009	HENKEL AG&CO. KGAA NON-VTG PRF NPV	DE0006048432	Buy	500	30.00	22.24	11,120.00	1.5058	EUR	Xetra	Stock

</

Position based view

Transactions can be filtered by date.

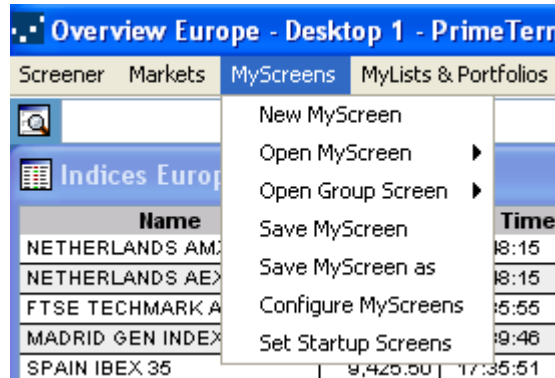
All Transactions (Dax Stocks CHF(CHF))										
Dax Stocks CHF		Gain/Loss	+30,104.34		Gain/Loss %	+7.60%		Last Transaction	01.02.2010	
Base Currency	CHF	# Positions	13		# Transactions	24		# Watch Positions	4	
Position	INTERNATIONAL BUSINESS MACHINES					From	01.02.2010		To	01.02.2010
# Transactions	2		Current Position			2,000		Avg. Price	124.67	
Type	Date	# Shares	Fees	Price Buy	Value Buy	FX Buy	Currency	Exchange		
Buy	01.02.2010	1,000	50.00	124.67	124,670...	1.0566	USD	NYSE		
Buy	01.02.2010	1,000	50.00	124.67	124,670...	1.0566	USD	NYSE		
[Close ▶]										

The following statistics on the position are provided

- Number (#) of transactions
- Current position
- Average (Avg) price

4.2 Usability: MyScreens Menu and Toolbar (All)

The **MyScreens** menu has been rearranged and enhanced.



The order in the menu has been adjusted to give frequently used functionality such as generating a new screen or opening a screen a more prominent position in the menu. Less frequent used functionality such as **Configure MyScreens** or **Set Startup Screens** are positioned at the bottom of the menu.

New MyScreen is a shortcut to the menu **Window → close all clips**. For quick access, a new toolbar button

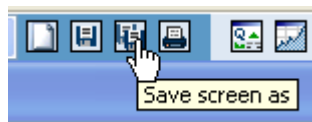


is also available to generate a new screen.

Open **Group Screen** is only available if the customer is using the **Group Screen** functionality, which can be used to provide and share centrally managed **Group Screens** to a selected number or all users.

A differentiation between **Save MyScreen** and **Save MyScreen As** has been introduced:

New toolbar buttons are also available for quick access.



Set Startup Screen is identical to **Configure Desktops** (version 2.6), which has been renamed to be more precise about the functionality behind the menu point.

Furthermore, ending dots on button labels such as **Rename...** (version 2.6) in the **Configure MyScreens** dialog have been removed (now only showing **Rename**).

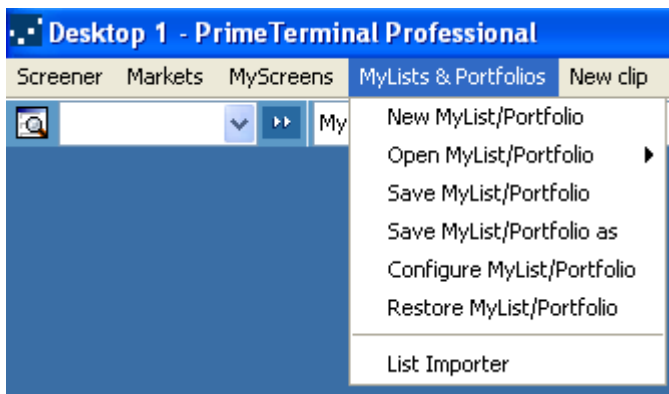
4.3 Usability: MyLists Menu and Toolbar (All)

MyList has been renamed to **MyList/Portfolio** in all related GUI elements to directly guide the user to the portfolio capabilities of PrimeTerminal. The top menu **MyLists** has been renamed to **MyLists & Portfolios**.

Furthermore, the user can now better personalize his view to **MyLists** or **Portfolios** by for example allocating **column presets** to the **MyList** or **Portfolio**.

A **Settings** dialogue has been introduced to allow for initial settings, for instance the default **column preset**.

The **MyLists & Portfolios** menu has been rearranged and enhanced.



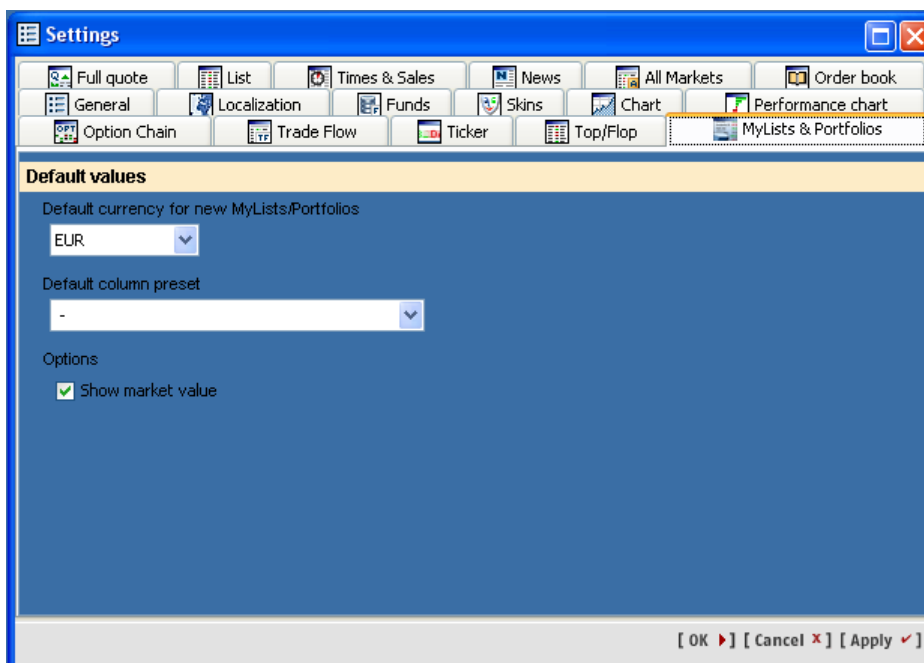
As within the **MyScreens** menu, the order in the menu has been adjusted to give frequently used functionality such as generating a new MyList or Portfolio or opening a MyList or Portfolio a more prominent position in the menu. Less frequent used functionality such as **Restore MyList/Portfolio** is positioned towards the bottom of the menu.

New MyList/Portfolio is the same functionality that was already available with the button **New** (version 2.6) in the menu **Configure MyList/Portfolio**. By this functionality, users can create an empty **MyList/Portfolio** which may then be filled by the known workflows.

Furthermore, ending dots on button labels such as **Delete...** (version 2.6) in the **Configure MyList/Portfolio** dialog have been removed (now only showing **Delete**).

A major enhancement is available by a combination of a new **Settings** dialogue **MyList/Portfolio** and **Configure MyList/Portfolio**.

4.3.1 MyLists & Portfolios Settings



With the **MyLists & Portfolios Settings** dialog, the user can set

- The **default currency** for new **MyLists** or **Portfolios**: This default currency is used in the dialogs **New MyList/Portfolio** and **Save MyList/Portfolio**



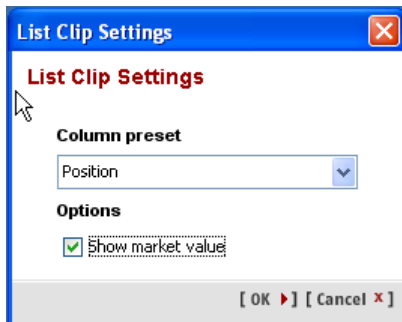
- The **default column preset** that shall be allocated to a new **MyList** or **Portfolio**, this would then be used when displayed in a **List Clip**
- If the line **Market Value** shall be shown in the **List Clip** displaying a **MyList** or **Portfolio** – if a **MyList** is used as a pure watch list without entering transactions - the **Market Value** line is not required.

4.3.2 Configure MyList/Portfolio

With the **List Clip Settings** button in the **Configure MyList/Portfolio** dialog, the user can allocate to any given **MyList** or **Portfolio**.

- A dedicated **column preset** that shall be allocated to the **MyList** or **Portfolio**, this would then be used when displayed in a **List Clip**.
- If the line **Market Value** shall be shown in the **List Clip** displaying a **MyList** or **Portfolio**.

These settings supersede the settings done on default level.



Please note that **column preset** settings on the levels

List Clip

MyLists & Portfolios Settings (default via **Settings** dialog)

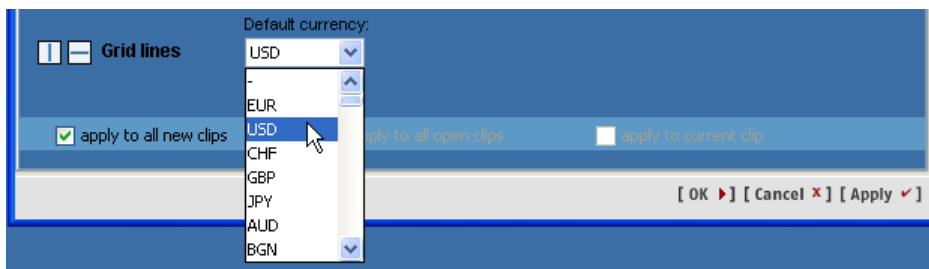
MyList/Portfolio Settings (dedicated via the **Configure MyList/Portfolio→List Clip Settings**)

are superseded by the next level.

If a **MyList** is stored in a **MyScreen** with different column settings, the **MyScreen** will open with the **MyList** columns as saved in the **MyScreen** and not necessarily according to default or dedicated **column preset** settings.

4.4 Usability: Default currency in the All Markets Clip (All)

The default currency can now be set in the **All Markets Settings** dialog.



The **default currency** is then used for converting the quote data to the selected currency.

Even if the selected **default currency** would not be in the list of notation currencies of the given **All Markets Clip** notation list, all quote data is converted according to the given **default currency**.

Within the **Normalise to** drop down providing a selection of currencies, the **default currency** (if set) would be the first entry, then – as before – the rest of the drop down is populated with all given notation currencies.

As before, the user may still change the normalization currency on demand within the **All Markets Clip**.

NESTLE SA CHF0.10(REGD) (All Markets)

Name: NESTLE SA CHF0.10(REGD)
ISIN: CH0038863350

Normalise to: USD

Exchange	Code Cont...	Bid size	Bid	Ask	Ask size	Last	Last Time & Date	Volume	Currency	Local I
SIX Swiss Exchange b...	-	1,003	0.000	0.000	510	45.417	17:30:41 27.05.10	6,790,280	CHF	3886335
CHI-X	-	0	n.a.	n.a.	0	45.374VIS	17:29:52 27.05.10	2,293,406	CHF	B0Z6H25
Turquoise	-	n.a.	n.a.	n.a.	n.a.	45.374E	17:19:46 27.05.10	773,296	CHF	n.a.
Xetra	-	n.a.	n.a.	n.a.	n.a.	45.501	17:36:27 27.05.10	68,389	EUR	A0Q4DC
Frankfurt	-	1,000	45.42	45.68	1,000	45.624	18:07:31 27.05.10	34,937	EUR	A0Q4DC
Nasdaq other OTC	-	n.a.	n.a.	n.a.	n.a.	45.45	18:00:08 27.05.10	3,046	USD	H573126
Stuttgart	-	500	45.408	45.705	500	45.705	18:24:07 27.05.10	4,179	EUR	A0Q4DC
over the counter Germ...	BFV	300	45.239	45.443	300	45.485	18:17:34 27.05.10	4,533	EUR	A0Q4DC
Hamburg	-	1,000	45.408	45.705	1,000	45.427	17:16:45 27.05.10	2,681	EUR	A0Q4DC
Munich	-	n.a.	45.408	45.705	n.a.	45.353	17:11:25 27.05.10	1,015	EUR	A0Q4DC
Duesseldorf	-	n.a.	45.408	45.705	n.a.	45.192	13:10:04 27.05.10	160	EUR	A0Q4DC
Euro TLX	-	n.a.	n.a.	n.a.	n.a.	45.179	16:12:08 27.05.10	340	EUR	n.a.
Berlin	-	800	45.42	45.68	800	45.439	16:48:38 27.05.10	193	EUR	A0Q4DC
over the counter Germ...	LUSG	n.a.	45.089	45.484	n.a.	45.276	18:25:22 27.05.10	n.a.	EUR	A0Q4DC
over the counter Switz...	ZZER	n.a.	43.941	44.809	n.a.	43.941JB	08:02:28 27.05.10	n.a.	CHF	3886335

4.5 Usability: Tool Tip in List Clip (All)

For data that is not fully visible (as the column in a List Clip is not wide enough), tool tips, showing the full data when the cursor is moved over the relevant content have been implemented.

List (Dax Stocks CHF (CHF))

Name	# Shares	Price Buy	Last	Currency	Last Time...	Exchange	Value Current (Portfolio Cur)	Gain/L
COMMERZBANK AG ORD N...	100	8.40	5.84	EUR	17:35:14 ...	Xetra	831.91	-
DEUTSCHE POST AG NPV...	1,000	10.38	11.975	EUR	17:35:14 ...	Xetra	17,058.39	+1.2
E.ON AG NPV	800	24.54	24.545	EUR	17:35:14 27.05.10		27,971.48	-1.8
EUR/CHF SPOT			1.4246	CHF	18:57:34 ...	over the counter USA		
GERMANY DAX(TR)			5,937.14		17:45:00 ...	Xetra		
HANNOVER RUECKVERSIC...	50	27.83	34.70	EUR	17:35:44 ...	Xetra	2,471.51	+
HENKEL AG&CO. KGAA NO...	500	22.24	37.905	EUR	17:35:28 ...	Xetra	26,997.84	+10.2
INTERNATIONAL BUSINES...	2,000	124.67	125.46F	USD	18:57:34 ...	NYSE	289,034.75	+25.2
LINDE AG NPV	100	58.64	83.96	EUR	17:35:08 ...	Xetra	11,960.10	+3.0
ROYAL BANK OF SCOTLAN...			46.77	GBX	17:35:17 ...	London Stock Exchan...		
RWE AG NPV	500	65.12	58.35	EUR	17:35:23 ...	Xetra	41,559.79	-7.8
SIEMENS AG NPV (REGD)			73.45	EUR	17:35:40 ...	Xetra		

4.6 Usability: Column Preset also in Screener Results (All)

The user defined column presets are now also available for the screener results.

Search results 175 1 2 3 4

General Performance Key figures Financials

Name	Last	Volume
3SBIO INC ADS EACH REPR...	10.84	15
4SC AG NPV	2.849	3.49
ABIOMED INC COM USD0.01	6.26	4
ACCELRYX INC COM USD0...	4.50	5
ACHILLION PHARMACEUTI...	0.71	90
ACTELION CHF0.50 (REGD)	28.05	
ACTIVE BIOTECH AB NPV	10.54	10
AETERNA ZENTARIS INC C...	1.81	50
AFFITECH A/S DKK0.5	0.41	3.99
AFFYMETRIX INC COM USD...	4.93	2
AGENIX AG NPV (BR)	4.43	20.91
ALKERMES INC COM USD0...	11.20	19
ALNYLAM PHARMACEUTIC...	12.91	11
ALTEON INC COM USD0.01	0.63	
ALTUS PHARMACEUTICAL...	0.123	2.00
AMAG PHARMACEUTICS IN...	24.50	

Optimize column width
Add column
Delete column

Set general data
Set quote data
Set performance & risk data
Set stocks data
Set warrants data
Set certificates data
Set bonds data
Set funds data
Set options data
Set futures data

Own preset lists
Preset lists
Sort

Stocks short
Stocks bid / ask
Stocks performance
Stocks fundamentals
Indices
Bonds
Funds
Warrants
Options
Futures
Currencies
Discount Cert
Knock Outs
Reverse Convertibles
Bonus Cert
Sprint
Outperformance
Position
Custom Selection

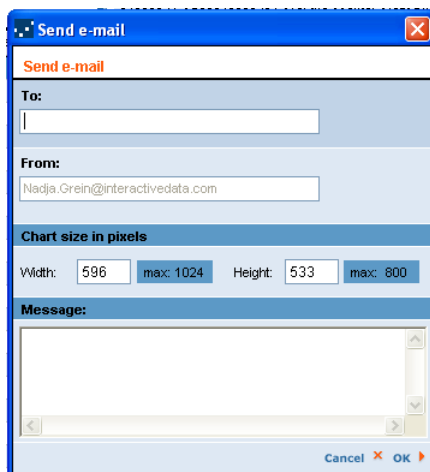
[Search] [Cancel X]

Low	Close (pr...
10.84	8.48
2.80	2.849
6.26	4.43
4.50	3.72
0.71	1.44
28.05	28.00
10.54	2.26
1.81	0.97
0.41	0.41
4.93	6.09
4.30	4.399
11.20	11.20
12.91	12.22
0.63	0.63
0.123	0.28
24.50	26.75

4.7 Interactive Charts (Advisor: all, Basic: subscription only)

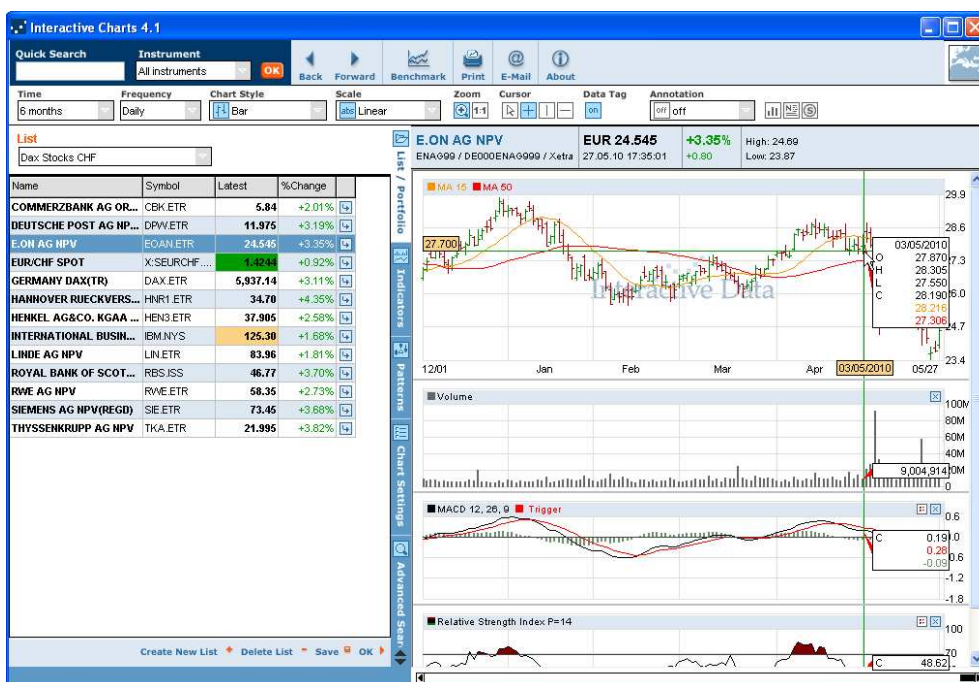
4.7.1 Enhanced: Mail sender

The e-mail sender is now taken automatically from the user login details. As such it is not required to be entered each time the functionality is used. For security reasons, the sender cannot be changed.



4.7.2 New: Digits Adjusted to PrimeTerminal settings

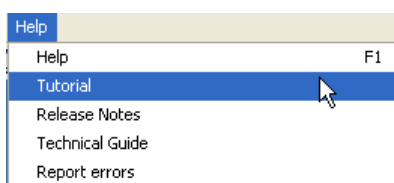
Interactive Charts is now using the same digits settings as **PrimeTerminal** (the number of absolute or significant digits displayed can be customized on ID_Application level).



5 Service

5.1 Enhanced: Help Menu (All)

The release notes and further documents such as **Tutorial** and **Technical Guide**, all available in the client area of www.primeterminal-ms.com, can now also be accessed via direct links from the **Help** menu. As for the **User Manual / Help**, the documents are opened in a browser.



5.2 New: Entitlements view (All)

A new **Entitlements** view is now available via **Help→Entitlements**. The **Entitlements** view provides an overview over all content and functionality packages that the user that is logged in has access to.

The following views are available:

All: provides a consolidated list of **PrimeTerminal Professional Default Content Bundle** and **Additional Contents**.

PrimeTerminal Professional Default Content Bundle: All content that is included at any given time in the **PrimeTerminal Professional** product.

Additional Contents: All content and functionality that is either entitled directly or via group profile assignment.

Content ID	Description	Available since
8077	AMEX Indices (RT Trades)	11.09.06
8079	AMEX Securities (DLY Trades)	09.07.07
8115	Athens SE Indices (DLY Trades)	11.09.06
8114	Athens SE Securities (DLY L1)	11.09.06
22286	Australian Indices (RT Trades)	09.07.07
8103	Australian Stock Exchange (DLY L1)	11.09.06
11704	BBA LIBOR Rates (DLY Pro)	11.09.06
18146	BOVESPA - São Paulo Stock Exchange (DLY L1)	09.07.07
17666	Balance Sheets - IDPRD	09.07.07
23045	Belgrade Stock Exchange (DLY L1)	09.07.07
15569	Bombay Indices (RT Trades)	07.11.06
15131	Bombay Securities (DLY L1)	09.07.07
8091	Borsa Italiana Indices (RT Trades)	09.07.07
8732	Borsa Italiana Indices, Stocks, Bonds, Derivatives (DLY L1 Pro)	09.07.07
16806	Bratislava Stock Exchange (DLY L1)	09.07.07
19972	Bucharest Indices (RT Trades)	09.07.07
19967	Bucharest Securities (DLY L1)	09.07.07
9091	Budapest Indices (RT Trades)	11.09.06
9092	Budapest Stock Exchange (DLY L1)	11.09.06
18146	Buenos Aires Stock Exchange (DLY L1)	09.07.07
24610	Bulgarian Indices (RT Trades, Push Pro)	09.07.07

The lists can be exported using the right mouse context menu Export.

6 Technical

6.1 Improved: Loading Time (All)

The application loading time has been shortened as the index constituents lists are not pre-loaded anymore, but on demand.

7 Fixes

The following fixes have been implemented.

- **MyList/Portfolio link to Event Calendar Clip (all, Event Calendar subscription only)**
The link to the Event Calendar Clip is now only available if at least one event product is entitled.
- **MyList/Portfolio link to the News Clip (all)**
If news are filtered for a MyList/Portfolio, the title of the News Clip is showing the MyList/Portfolio name.
- **Event Calendar Clip (subscription only)**
The flags are now resizing properly with resizing of the font size.
- **Risk Return Map Tool (subscription only)**
On drag & drop interaction from PrimeTerminal to the Risk Return Map Tool, the category selection capability has been fixed.
- **PrimeTerminal GUI (all)**
Removed graying-out of menus.
- **Interactive Charts (Advisor: all, Basic: subscription only)**
Cursors now remain visible while repainting due to push-updates
- **Option Chain Clip (all)**
Fix for S&P 500 index underlying.
The display is now correct if the number of Calls and Puts differ.
- **DDE data export for dividend data**
DDE data export for dividend data has been fixed.