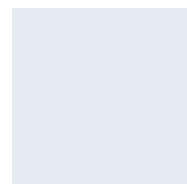
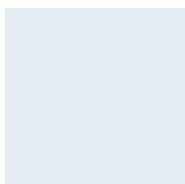
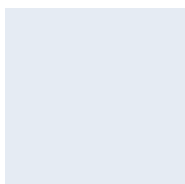
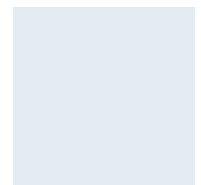
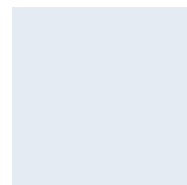
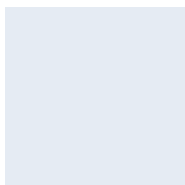
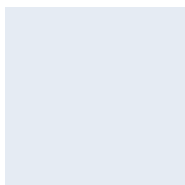
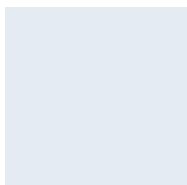
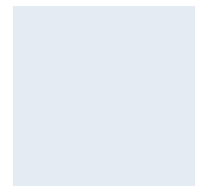
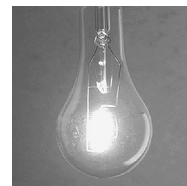
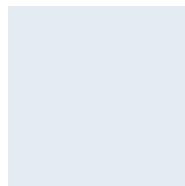
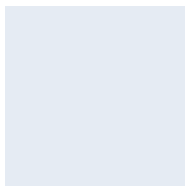
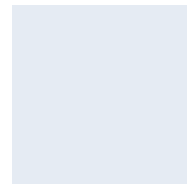
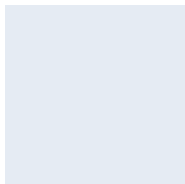
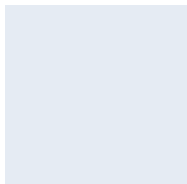


Company Unrestricted

## Release Notes

# PrimeTerminal Professional 3.7

Release 10/02/2016



## Table of Contents

1	Preface	4
2	Management Summary: Top New Content and Functionality	5
3	New Product Offering	9
3.1	PrimeTerminal Asset Manager (Europe) (subscription only)	9
3.1.1	Data Loader functionality	9
4	New Content & Visualization Enhancements	11
4.1	Exchange traded content	11
4.1.1	Changes to the PrimeTerminal Pro Default Content (16126) bundle since 30/09/2014 (all)	11
4.2	Bonds	12
4.2.1	New: Searching by issuer in Bonds screener (all)	12
4.2.2	New: Link to IDS View (subscription only)	13
4.3	Futures	13
4.3.1	Enhanced: Chain displays	13
4.4	Funds	13
4.4.1	New: Geographic subsets for Morningstar funds data available (subscription only)	13
4.5	Cross Asset	14
4.5.1	Enhanced/New: Markets - Predefined screens updated / new (all)	14
4.5.2	New/Enhanced: Reference data - Local IDs available as singular data fields in List clip via Set general data (partly subscription only)	15
4.6	Exchanges	17
4.6.1	Xetra: New auction panel in Stocks Full Quote clip, Xetra BEST now available in Full Quote clip and List clip (all)	17
4.6.2	Searching for rolling futures returns preferably the electronic and not the floor-traded notation for NYMEX – Globex (all)	18
4.6.3	Eurex: Exchange specific Set quote data menu hidden	18
5	Functionality and Usability Enhancements	19
5.1	New: Web clip (all)	19
5.1.1	Technical details	20
5.1.2	MySettings for the web clip	20
5.1.3	Context menu within the web clip	21
5.2	New version: XLPort 1.8 (PrimeTerminal Professional Advisor/Asset Manager (Europe): all, PrimeTerminal Professional Basic: subscription only)	22
5.2.1	Functional improvements	22
5.2.2	Content improvements and fixes	25
5.2.3	Usability improvements and user guidance	25
5.2.4	Technical improvements	26
5.3	Enhanced: Collaboration - Sending MyLists/Portfolios together with MyScreen (all)	28

5.4	Predefined Markets screens: Chart clip (classic) replaced with Chart clip in all predefined Markets screens (all)	29
5.5	Enhanced: Chart clip (all)	29
5.5.1	Quick bar visibility	29
5.5.2	Adding benchmarks	30
5.5.3	Deleting indicators and benchmarks from main chart	30
5.5.4	Definition of custom periods for the chart clip and indicator parameterization	30
5.5.5	Easier navigation to the properties	31
5.5.6	Coloured volume indicator	32
5.5.7	MySettings: Background grid style	32
5.6	Enhanced: News search clip (all)	33
5.7	Enhanced: Alert clip - Notification about upcoming automatic deactivation of alerts	33
5.8	Enhanced: List clip: Copy columns - Paste columns	34
5.9	New: Full screen mode	34
6	Technical	35
6.1	Loading MyLists/Portfolios on initial loading of PrimeTerminal (all)	35
6.2	Supported environment (all)	35
6.3	Supported JRE version (all)	35
7	Service and Documentation	35
8	Fixes and translations quality assurance (all)	36

# 1 Preface

This document outlines all changes compared to PrimeTerminal Professional 3.6.

All documented changes apply to PrimeTerminal Professional Basic, Advisor and Asset Manager Europe. The information in brackets indicates if a change is available and relevant on specific content or news subscription basis only ("subscription only") or to all users ("all").

All screenshots are examples for illustrating purposes only. The exact layout and display may vary depending on the supplied PrimeTerminal in each case of customization.

The information contained in this document shall not be deemed as financial advice, consultancy, or express warranty, or warranty of fitness for a special purpose. Interactive Data Managed Solutions will not be liable for any inaccuracy or incompleteness of the information, or data supplied with this document.

This document contains confidential information and is provided exclusively for the information of the recipients. It may not be copied or distributed to any third party.

## Release Notes Usage Notes

**Bold blue words** refer to menu options and settings that you see in your PrimeTerminal user interface.

**Bold black words** are used for emphasis in the text.

## 2 Management Summary: Top New Content and Functionality

We are pleased to announce a new release of **PrimeTerminal Professional**, our customizable, easy-to-use financial market terminal.

Please find below the release notes for version 3.7, available from 10/02/2016. Furthermore, please find below the release notes for **XLPort** 1.8, available from 10/02/2016.

If you are using a customized version of **PrimeTerminal Professional**, the rollout date may vary, depending on individual arrangements.

Both releases provide both content and functional improvements.

The key enhancements are:

### New Product Offering

#### ***PrimeTerminal Asset Manager (Europe) (subscription only)***

Knowing that asset managers have specific requirements as to the content and functionality they need, we have created a custom package to efficiently support their daily workflows.

Tailored packages include selected price and fundamental data, as well as news and events information. Users can import portfolios from their internal systems and spreadsheets into a portfolio calculation tool and track P&Ls in real-time.

A convenient export function allows to download selected data and process it within own applications, such as portfolio management systems or analytical tools.

For more information, please contact your Interactive Data account representative and also visit the PrimeTerminal [microsite](#).

### New Content and Visualization Enhancements

#### ***Bonds: Searching by issuer in Bonds Screener (all)***

Users can now search by issuer within the **Bonds Screener** - either by name, parts of a name, or initial. Multiple issuers can be defined as search criteria.

#### ***Funds: Geographic subsets for Morningstar funds data available (subscription only)***

Nine geographic subsets are now available for Morningstar data, such as Germany, Switzerland, France, etc.

For more information, please contact your Interactive Data account representative.

#### ***Reference data: Local IDs available as singular data fields in List clip via Set general data (partly subscription only)***

Until version 3.6, local IDs such as Wertpapierkennnummer, Cusip and Sedol had only been available in the field **Local ID** for the corresponding exchange or OTC market. They are now also available for all exchanges or OTC markets.

For some local IDs, display or download restrictions apply. For more information, please contact your Interactive Data account representative.

***Futures: Searching for rolling futures returns preferably the electronic and not the floor-traded notation for NYMEX – Globex (all)***

Clip search for futures has been adjusted to prefer the electronic notation as reference notation over the floor-traded notation.

***Xetra: New auction panel in Full Quote clip, Xetra BEST now available in Full Quote clip and List clip (all)***

The Xetra-specific template for the **Full Quote** clip has been adjusted. Xetra BEST data is now available via the **Full Quote** clip as well as the **List clip** via **Set quote data --> Exchange specific --> Xetra**.

***Markets: predefined screens (all)***

26 predefined screens have been reviewed and replaced.

## **New and Enhanced Functionality**

***New: PrimeTerminal Data Loader (subscription only, as part of PrimeTerminal Asset Manager (Europe))***

PrimeTerminal's Asset Manager Edition grants the right to export historical price and selected reference data in Microsoft Office Excel, csv and XML format in order to further process it in internal tools and applications.

Users are entitled to use the **Data Loader** functionality in order to administrate the assets and portfolios they are personally responsible for within their company structure. The link to the **Data Loader** is now also available via **Tools --> Data Loader**.

For more information, please contact your Interactive Data account representative and also visit the PrimeTerminal [microsite](#).

***New: Web clip (all)***

Any hyperlink from **PrimeTerminal** to web content is now opening in an embedded **Web clip** (default setting) or external browser (to choose in **MySettings**). The web clip can also be used in customized **PrimeTerminal** solutions, for example to hyperlink from **PrimeTerminal** to display HTML-based content from the client's intranet, extranet or from the internet, fully integrated within **PrimeTerminal**.

***New: XLPort 1.8 (PrimeTerminal Professional Advisor/Asset Manager (Europe): all, PrimeTerminal Professional Basic: subscription only)***

XLPort 1.8 is now available for installation. **XLPortHistory** and the **Quote history** wizard have been improved. Furthermore, this version includes various technical enhancements as to installation, recalculation behavior and sharing configuration with **PrimeTerminal**.

**Enhanced: Collaboration: Sending MyList/Portfolio together with MyScreen (all)**

When a user sends a **MyScreen** containing MyLists/**Portfolios** to one or more other users, he is asked whether he would like to send also the **MyLists/Portfolios** saved in a **MyScreen**. The **MyLists/Portfolios** to be sent can then be selected.

**Predefined Markets screens: Chart clip (classic) replaced with Chart clip in all predefined Markets screens (all)**

**Chart clip (classic)** has been replaced by **Chart clip** in all predefined **Markets** screens. Personal **MyScreens** have not been migrated.

**Enhanced: Chart clip (all)**

Various enhancements have been implemented for the **Chart clip**, for even faster, more efficient and user friendly use of the clip.

**Enhanced: News search clip (all)**

Multi-selection of languages is now available within the **News search clip**.

**Enhanced: Alert clip: Notification about upcoming automatic deactivation of alerts**

In order to extend the lifetime of alert triggers that are about to expire, the user is now informed accordingly on initial loading of **PrimeTerminal**. He can choose to extend the lifetime and reactivate the alert trigger, or to delete it, if not required at all anymore.

**Enhanced: List clip: Copy columns - Paste columns**

For quick copying of a columns layout from one List clip to another, the new context menus **Copy columns** and **Paste columns** have been added.

## Technical enhancements

**Loading MyLists/Portfolios on initial loading of PrimeTerminal (all)**

The initial loading time of **MyLists/Portfolios** is much shorter, depending on the number of **MyLists/Portfolios** saved by the user.

**Supported environment (all)**

**PrimeTerminal** (incl. **DDE**) is supported up to Microsoft® Office 2016 32/64 bit and Microsoft® Windows 10 32/64 bit. For **XLPort**'s supported environments please refer to the chapter 5.2.4.3. The Technical Guide has been updated to reflect this change.

**Supported JRE version (all)**

JRE version 1.7 update 6 or higher is required to run **PrimeTerminal**. The Technical Guide and the Application Tester have been updated to reflect this change.

## Service and Documentation

- The Technical Guide has been updated.
- The Application Tester has been updated.
- The content lists have been updated, also in the light of the PrimeTerminal Asset Manager introduction.
- Release Notes for XLPort version 1.8 have been provided. The XLPort User Manual will be updated in due course.
- An XLPort version 1.8 fields data dictionary is now available.

Further to these enhancements, we have improved product quality, performance and stability for both **PrimeTerminal** and **XLPort**.

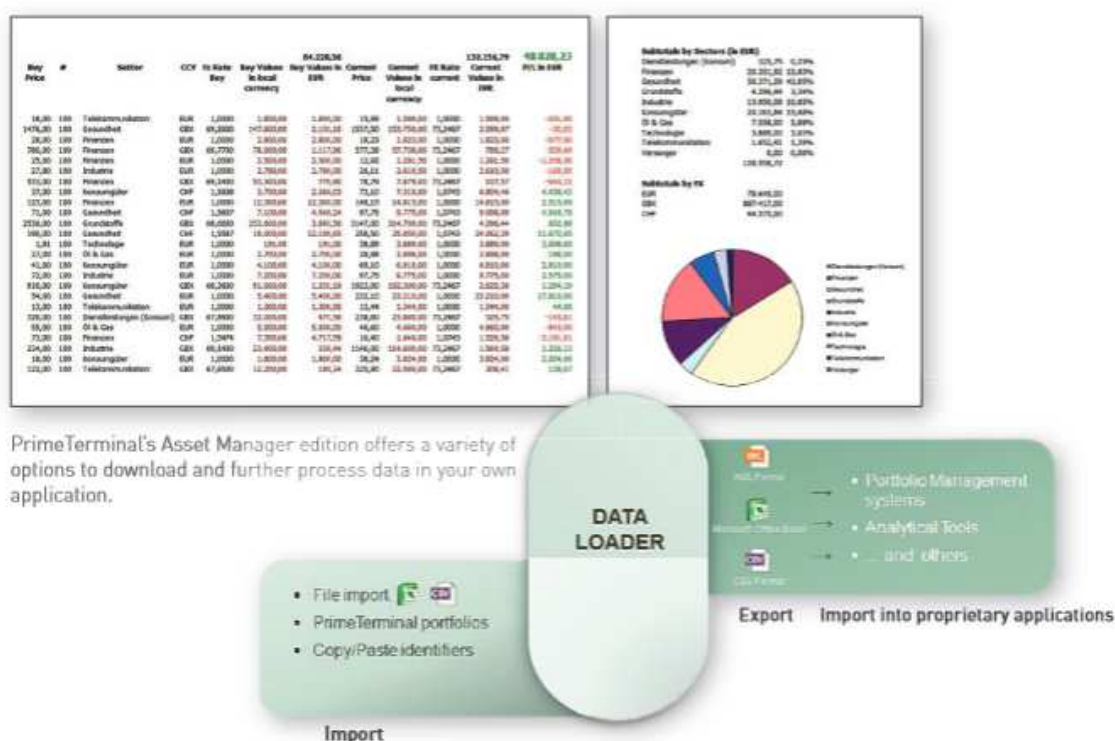
## 3 New Product Offering

### 3.1 PrimeTerminal Asset Manager (Europe) (subscription only)

Knowing that asset managers have specific requirements as to the content and functionality they need, we have created a custom package to efficiently support their daily workflows.

Tailored packages include selected price and fundamental data, as well as news and events Information. Users can import portfolios from their internal systems and spreadsheets into a portfolio calculation tool and track P&Ls in real-time.

A convenient export function allows to download selected data and process it within own applications, such as portfolio management systems or analytical tools.



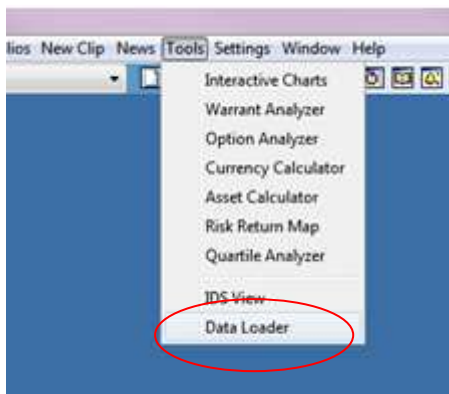
For more information, please contact your Interactive Data account representative and also visit the PrimeTerminal [microsite](#).

#### 3.1.1 Data Loader functionality

PrimeTerminal's Asset Manager edition grants the right to export historical price and selected reference data in Microsoft Office Excel, csv and XML format in order to further process it in internal tools and applications.

Users are entitled to use the PrimeTerminal **Data Loader** functionality in order to administrate the assets and portfolios they are personally responsible for within their company structure.

The link to the Data Loader is now also available via **Tools --> Data Loader**.



The link points to <http://primeterminaldataloader.mdgms.com/>, the **PrimeTerminal Data Loader** GUI. User credentials are shared with **PrimeTerminal Professional**. Any existing session of **PrimeTerminal Professional** with the same login credentials will be automatically logged out.

With the **Data Loader**, EOD histories for a given set of instruments for a given date can be downloaded.

The user can define the instrument universe, data fields and export format via a wizard style GUI.

## 4 New Content & Visualization Enhancements

### 4.1 Exchange traded content

#### 4.1.1 Changes to the PrimeTerminal Pro Default Content (16126) bundle since 30/09/2014 (all)

##### 4.1.1.1 Additions

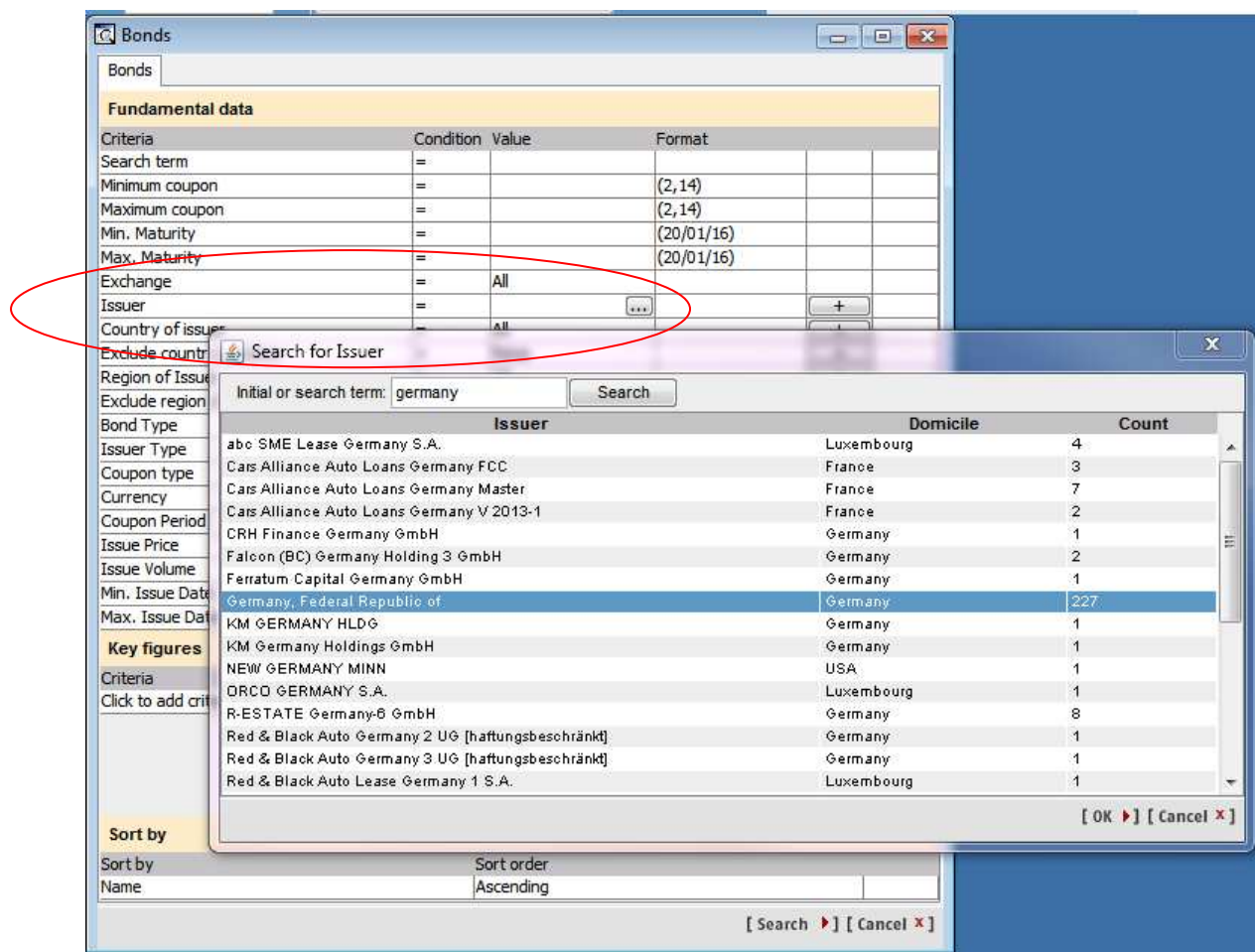
The following sales products have been added since 30/09/2014 (release version 3.6)

Date	Product	Sales product
01/10/2014	Sociedad de Bolsas Electronic Outcry Trading (CRR N1 +) (DLY L1+)	34525
01/10/2014	Sociedad de Bolsas Indices (IND BME) (DLY Trades)	9625
06.05.2015	Bloomberg UBS Commodity Indices (RT Trades)	35385
30.06.2015	Casablanca SE Market Data (DLY L1 Plus)	35109
03.07.2015	Tunis Stock Exchange market data (DLY L1)	35525
20.07.2015	Sociedad de Bolsas Fixed Income (BME RF LP) (DLY Trades)	35567
08.10.2015	Tunis Stock Exchange Indices (RT Trades)	36107
22.01.2016	Euronext Cash (DLY L2)	8056
22.01.2016	Pfandbriefe-Renditen der Deka-Bank (Daily Updates) (Public)	24566

## 4.2 Bonds

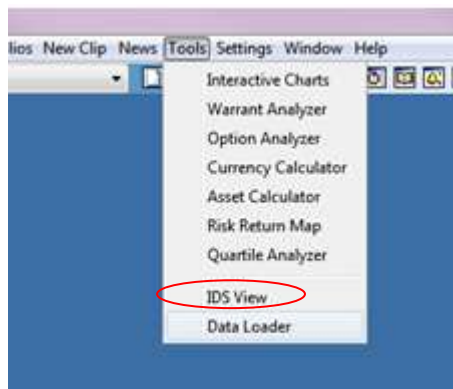
### 4.2.1 New: Searching by issuer in Bonds screener (all)

Users can now search by issuer within the **Bond Screener** - either by name, parts of a name or initial. Multiple issuers can be defined as search criteria.



## 4.2.2 New: Link to IDS View (subscription only)

In addition to the context sensitive link to **IDS View**, there is a new link to **IDS View** from **Tools** → **IDS View**.



## 4.3 Futures

### 4.3.1 Enhanced: Chain displays

The clips **Open chain** → **Futures** → **On underlying** and **Open chain** → **Futures** → **All maturities** now also contain the column **Maturity** for easier overview.

Ticker	Exchange	Maturity	Bid (size)	Ask (size)	Last	Last Time & Date	Volume	Net chg.	High	Low	Settle
FGBLC1	Eurex	03 / 2016	163.920...	163.940...	163.9400	22.03.31 05.02.16	7,12,455	+0.23	164.0300	163.3100	16
FGBLH16	Eurex	03 / 2016	163.920...	163.940...	163.9400	22.03.31 05.02.16	7,12,455	+0.23	164.0300	163.3100	16
FGBLC2	Eurex	06 / 2016	161.170...	161.550...	161.3400	21.01.27 05.02.16	2,340	+0.33	161.4100	160.9500	16
FGBLM16	Eurex	06 / 2016	161.170...	161.550...	161.3400	21.01.27 05.02.16	2,340	+0.33	161.4100	160.9500	16
FGBLC3	Eurex	09 / 2016	n.a.	n.a.	160.0500	17.16.57 05.02.16	n.a.	+2.48	160.0500	160.0500	16
FGBLU16	Eurex	09 / 2016	n.a.	n.a.	160.0500	17.16.57 05.02.16	n.a.	+2.48	160.0500	160.0500	16

© 1996-2016 Interactive Data Managed Solutions AG, all rights reserved.

## 4.4 Funds

### 4.4.1 New: Geographic subsets for Morningstar funds data available (subscription only)

Nine geographic subsets are now available for Morningstar data, such as Germany, Switzerland, France, etc.

The following sales products are available:

- 36225 Morningstar Funds RFS Belgium for PrimeTerminal
- 36226 Morningstar Funds RFS France for PrimeTerminal
- 36227 Morningstar Funds RFS Germany for PrimeTerminal
- 36228 Morningstar Funds RFS Italy for PrimeTerminal
- 36230 Morningstar Funds RFS Spain for PrimeTerminal
- 36231 Morningstar Funds RFS Sweden for PrimeTerminal
- 36232 Morningstar Funds RFS Switzerland for PrimeTerminal

- 36233 Morningstar Funds RFS The Netherlands for PrimeTerminal
- 36234 Morningstar Funds RFS UK for PrimeTerminal

The same download restrictions apply for downloading data to Microsoft Office Excel for DDE and XLPort as for Morningstar Funds RFS Europe for PrimeTerminal (20905).

For more information, please contact your Interactive Data account representative.

## 4.5 Cross Asset

### 4.5.1 Enhanced/New: Markets - Predefined screens updated / new (all)

26 predefined **Markets** screens have been reviewed and replaced:

- Europe → Hungary
- Asia/Pacific → Malaysia
- Asia/Pacific → Hong Kong
- Asia/Pacific → Japan
- Asia/Pacific → Philippines
- Asia/Pacific → Taiwan
- Indices → Austria
- Indices → Hong Kong
- Indices → Switzerland
- Money Markets → Deposits → European Euro Deposits
- Money Markets → Deposits → Asian Deposits
- Money Markets → Forward Rate Agreements → EUR – USD
- Money Markets → Forward Rate Agreements → CZK - PLN - HUF - RUB - TRY
- Money Markets → Interbank Rates → Europe → EUR
- Money Markets → Interbank Rates → Europe → NOK - ISK
- Money Markets → Interbank Rates → Middle East/Africa → AED - KWD - BHD - SAR – ILS
- Money Markets → Interbank Rates → Middle East/Africa → ZAR
- Money Markets → Interbank Rates → Asia → CNY - HKD - MYR - PKR - THB - TWD
- Money Markets → Interest Rate Swaps → Europe → EUR-CHF-GBP
- Money Markets → Interest Rate Swaps → Europe → DKK- NOK- SEK
- Money Markets → Interest Rate Swaps → Americas → USD
- Money Markets → Interest Rate Swaps → Americas → CAD (new)
- Money Markets → Certificates of Deposit → EUR/USD
- Commodities & Energy → Gold
- Commodities & Energy → Silver - Platinum - Palladium
- Markets → Contributors → Berner Kantonalbank (BEKB) → replaced sector index lists with updating sector index constituents

The following two **Markets** screens had to be removed

- Contributors → ICAP → Interest Rate Swaps → Europe → BGN-HRK-RUB
- Money Markets → Interest Rates Swaps → Europe → LVL – LTL

Furthermore, various instrument lists have been updated (where no change of the screen structure was required).

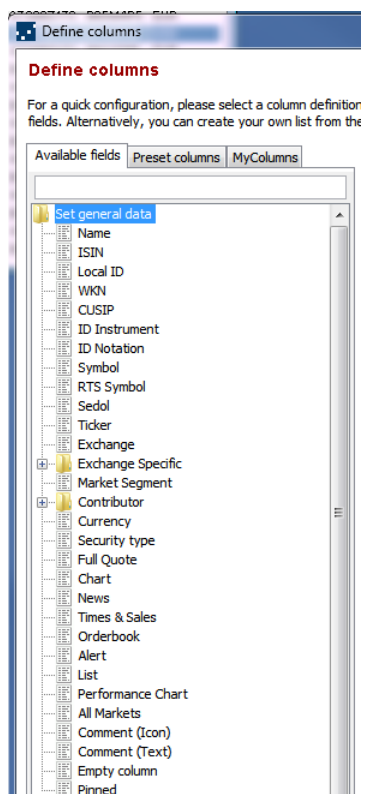
## 4.5.2 New/Enhanced: Reference data - Local IDs available as singular data fields in List clip via Set general data (partly subscription only)

Until version 3.6, local IDs such as Wertpapierkennnummer, Cusip and Sedol had only been available in the field Local ID for the corresponding exchange or OTC market. They are now also available for all exchanges or OTC markets.

Name: ROYAL BK OF SCOTLD GRP,THE		ISIN: GB00B7T77214				Normalise to: <div><div></div></div>				
Exchange	ISIN	Symbol	ID Notation	Ticker	Local ID	ID Instrument	WKN	CUSIP	Sedol	Currency
BATS Europe	GB00B7T77214	E:RBSL.I21	56239635	RBS	B7T7721	51288936	A1JXTD	07586Z172	B7T7721	GBP
Berlin	GB00B7T77214	RYS1.BER	65130601	RYS1	A1JXTD	51288936	A1JXTD	07586Z172	B8C2786	EUR
BOAT	GB00B7T77214	E4:RBS.XLON-USD.BOA	20381693	RBS	B7T7721	51288936	A1JXTD	07586Z172	n.a.	USD
BOAT	GB00B7T77214	E4:RBS.XLON-GBP.BOA	20381691	RBS	B7T7721	51288936	A1JXTD	07586Z172	B7T7721	GBP
CHI-X	GB00B7T77214	E:RBSL.CHX	20181168	RBS	B7T7721	51288936	A1JXTD	07586Z172	B7T7721	GBP
Duesseldorf	GB00B7T77214	RYS1.DUS	65130600	RYS1	A1JXTD	51288936	A1JXTD	07586Z172	B8C2786	EUR
Euronext Amsterdam	GB00B7T77214	n.a.	19699145	RBS	n.a.	51288936	A1JXTD	07586Z172	B65M4P5	EUR
FINRA other OTC Issues	GB00B7T77214	RBSPF.NOO	9232372	RBSPF	07586Z172	51288936	A1JXTD	07586Z172	B75ZF40	USD
Frankfurt	GB00B7T77214	RYS1.FSE	63450850	RYS1	A1JXTD	51288936	A1JXTD	07586Z172	B8C2786	EUR
Hamburg	GB00B7T77214	RYS1.HAM	65185446	RYS1	A1JXTD	51288936	A1JXTD	07586Z172	B8C2786	EUR
Hanover	GB00B7T77214	RYS1.HAN	2019569	RYS1	A1JXTD	51288936	A1JXTD	07586Z172	B8C2786	EUR
London Stock Exchange	GB00B7T77214	RBS.ISS	9454066	RBS	B7T7721	51288936	A1JXTD	07586Z172	B7T7721	GBP
Munich	GB00B7T77214	RYS1.MUN	65130598	RYS1	A1JXTD	51288936	A1JXTD	07586Z172	B8C2786	EUR
Pink Sheets	GB00B7T77214	RBSPF.PNK	62146892	RBSPF	07586Z172	51288936	A1JXTD	07586Z172	B75ZF40	USD
SIX SLS	GB00B7T77214	GB00B7T77214-GBX.ZRH	65243264	RBS	B7T7721	51288936	A1JXTD	07586Z172	n.a.	GBP
SIX Swiss Exchange	GB00B7T77214	RBS.ZRH	116588299	RBS	403197	51288936	A1JXTD	07586Z172	n.a.	CHF
Stuttgart	GB00B7T77214	RYS1.STU	65130599	RYS1	A1JXTD	51288936	A1JXTD	07586Z172	B8C2786	EUR
Tradegate	GB00B7T77214	RYS1.E07	65118173	RYS1	A1JXTD	51288936	A1JXTD	07586Z172	B8C2786	EUR
Turquoise	GB00B7T77214	E:RBSL.TRQ	24440382	RBS	B7T7721	51288936	A1JXTD	07586Z172	B7T7721	GBP
Xetra	GB00B7T77214	RYS1.ETR	65130602	RYS1	A1JXTD	51288936	A1JXTD	07586Z172	B8C2786	EUR

© 1996-2016 Interactive Data Managed Solutions AG, all rights reserved.

The menu in **Define columns** → **Set general data** has been adjusted accordingly:



For some local ID's, display or download restrictions apply. For more information, please contact your Interactive Data account representative.

## 4.6 Exchanges

### 4.6.1 Xetra: New auction panel in Stocks Full Quote clip, Xetra BEST now available in Full Quote clip and List clip (all)

The Xetra-specific template for the **Full Quote** clip has been adjusted to show

- Indicative price, volume, date and timestamp
- Surplus side, volume, date and timestamp
- Latest auction price, volume, date and timestamp
- Xetra BEST price, volume, date and timestamp
- Information on status/suspension and phase/condition

DBK.ETR		DEUTSCHE BANK		Stock	
▼ 14.495		-0.78 -5.08%		EUR 14:25:06 02/08	
Xetra		DE0005140008		Quality: DLY	
				Full Quote	
Full Quote					
Last size	1,598	Open	15.35	Volume	10,453,417
Bid size	7,764	High	15.37	Trading vol.	154,896,729.26
Bid	14.49	Low	14.42	Number of trades	10,132
Ask	14.495	Close (previous day)	15.27	High (250d)	33.42
Ask size	1,725	VWAP	14.818	Low (250d)	14.61
Indicative price	14.76	Indicative volume	6,492	Indicative time & date	13:01:54 02/08
Surplus side	N	Surplus volume	0	Surplus time & date	13:02:27 02/08
Last Auc price	14.76	Last Auc volume	6,492	Last Auc time & date	13:02:27 02/08
Xetra BEST price	14.504	Xetra BEST volume	100	Xetra BEST time & date	14:25:00 02/08
Status/Suspension	TRADE	Phase/Condition	TRADE	Suspended	no
Performance					
Perf % 1w	-6.89%	Vola 1w	58.00	Beta 1Y	1.12
Perf % 3m	-39.52%	Vola 3m	39.07	Corr. 1y	0.77
Perf % 1y	-43.72%	Vola 1y	35.47	Outperf benchm 1y	-26.71
Perf % YTD (RLT)	-35.65%	Vola 3Y	29.40	Benchmark	GERMANY DAX
Reference Data					
Local ID	514000	Domicile	Germany	ICB Supersector	Banks
Market cap (m)EUR	21,061.50	Industry	Banks	ICB Sector	Banks
Sector	Financial	ICB Industry	Financials	ICB Subsector	Banks
Dividends, EPS and P/E					
Dividend (EUR)	0.75	Dividend (ann)EUR(2015)	0.75	EPS(EUR) 2014	1.34
Ex Dividend Date	05/22/2015	Div Yield (%)2015)	5.1742	P/E	10.8209
Current average of Analyst report					
			Avg recommendation 2.81818		
EPS(e)EUR) 2015	3.265	P/E(e) 2015	6.89893	CFS(e)EUR) 2015	n.a.
EPS(e)EUR) 2016	1.88472	P/E(e) 2016	8.102	CFS(e)EUR) 2016	n.a.
EPS(e)EUR) 2017	2.61	P/E(e) 2017	5.85057	CFS(e)EUR) 2017	n.a.
Dividend(e)EUR) 2015	0.00	Dividend yield(e) 2015	0.00	EBIT(e) 2015	7,356.80
Dividend(e)EUR) 2016	0.00	Dividend yield(e) 2016	0.00	EBIT(e) 2016	3,313.75
Dividend(e)EUR) 2017	0.75	Dividend yield(e) 2017	4.9116	EBIT(e) 2017	5,559.24

© 1996-2016 Interactive Data Managed Solutions AG, all rights reserved.

All data fields besides Xetra BEST data fields are also available in the **List clip** via **Set quote data** → **State & Auction**.

Xetra BEST data fields are also available in the **List clip** via **Set quote data** --> **Exchange specific** → **Xetra**.

#### 4.6.2 Searching for rolling futures returns preferably the electronic and not the floor-traded notation for NYMEX – Globex (all)

Clip search for futures has been adjusted to prefer the electronic notation as reference notation over the floor-traded notation.

#### 4.6.3 Eurex: Exchange specific Set quote data menu hidden

The exchange specific **Set quote data** → **Exchange specific** → **Eurex** menu is not required anymore (performance calculations have been aligned for Eurex in the MDG backend). The following data fields are still available but hidden for compatibility reasons if saved in a **MyScreen** or **MyColumns** definition.

- Close (prev Day) (Eurex)
- Close Date (Eurex)
- Close Time & Date (Eurex)
- Chg % (Eurex)
- Net chg. (Eurex)

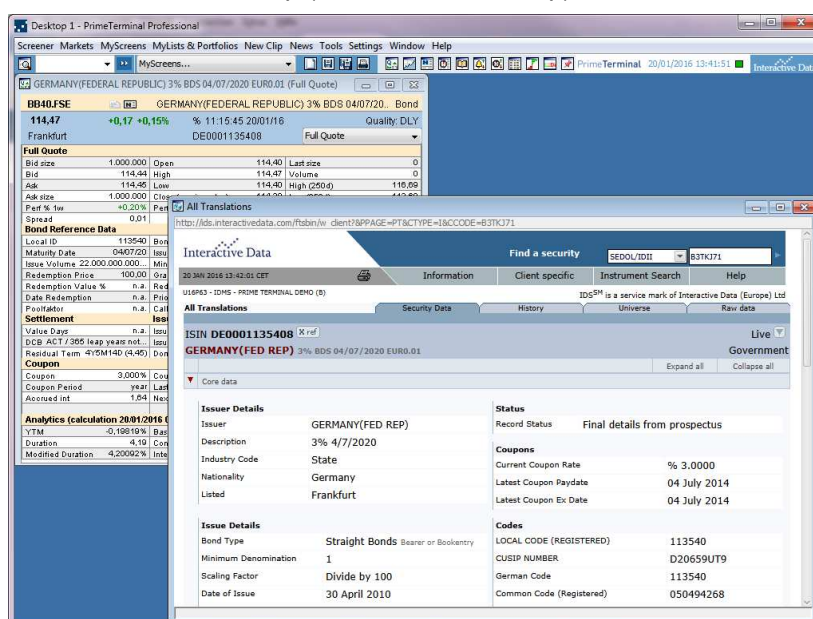
## 5 Functionality and Usability Enhancements

### 5.1 New: Web clip (all))

Any hyperlink from **PrimeTerminal** to web content is now opening in an embedded **Web clip** (default setting) or in an external browser (to choose in **MySettings**).

Example link types:

- From the **Help** menu (to Release Notes, PrimeTerminal Professional, About Interactive Data, Dow Jones News Plus, Reprisk Methodology, etc)
- IDS View: context sensitive link and via **Tools** --> **IDS View** (new link)
- From **Full Quote** clip report clips (such as **Fact Sheet** for stocks)
- From the **Event Calendar** clip
- From **News clip** or **News Headline clip** to websites, e-mail addresses or multimedia news such as audio or video files, or images
- From **Web Feeds** clip (aka RSS Reader clip)



The **Web clip** can also be used in customized **PrimeTerminal** solutions, for example to display HTML-based content from the client's intranet, extranet or from the internet, fully integrated within **PrimeTerminal**. Furthermore, it could be used to display HTML clips or tools fully integrated within **PrimeTerminal**. This is especially valuable when linking financial instrument context to web-based client research data, marketing documents or instrument fact sheets.

### 5.1.1 Technical details

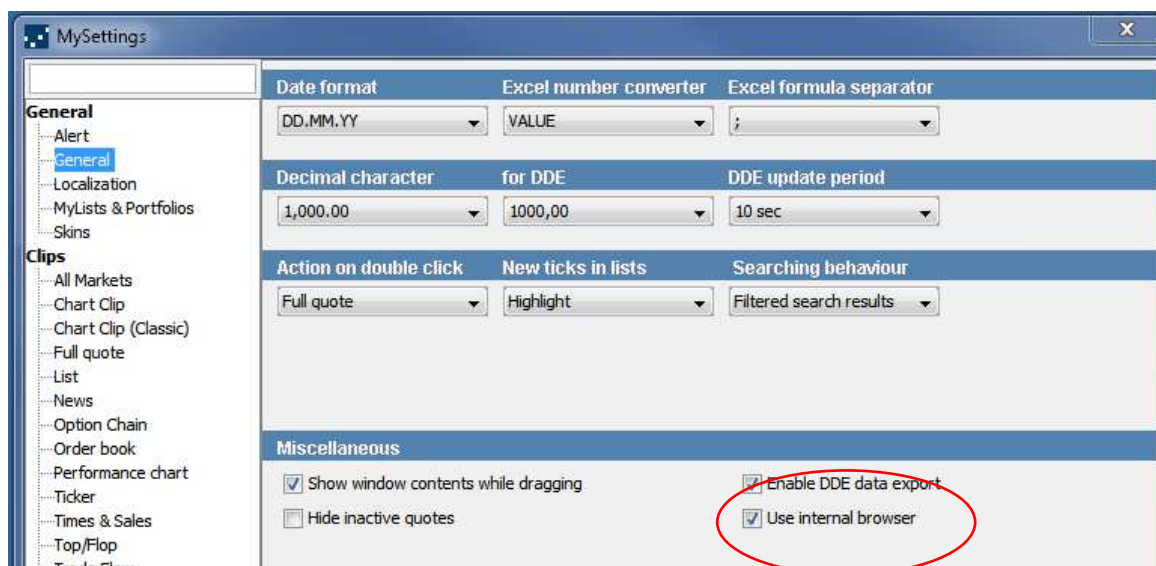
The display of web content uses the embedded web browser available in Java 1.7 Update 6 and greater.

This embedded browser is based on webkit, an open source browser engine, which supports Cascading Style Sheets (CSS), Javascript, Document Object Model (DOM) and HTML 5. Supported features of HTML 5 in the latest version include canvas element, SVG element and media playback. It does not provide support for any web pages that require third party plugins such as Flash, Java Applets, Silverlight.

To ensure an optimal browsing experience using this clip, Interactive Data recommends that you are using the latest version of Java.

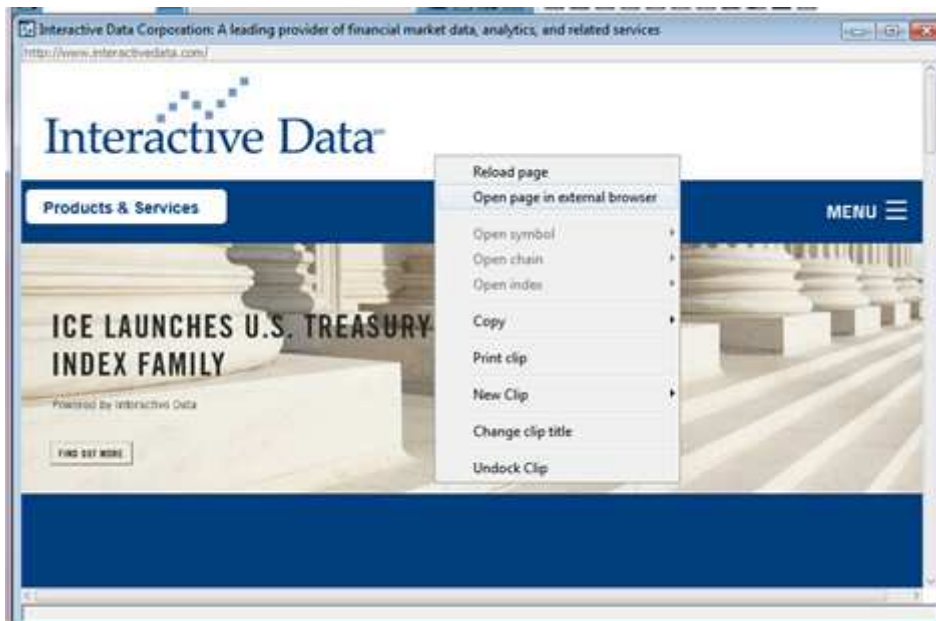
### 5.1.2 MySettings for the web clip

To choose if hyperlinks shall be opened in an external browser or within PrimeTerminal, a new **MySettings** dialog is available: **MySettings** → **General** → **Miscellaneous** → **Use internal browser** (checkbox)



### 5.1.3 Context menu within the web clip

To open a page that was previously opened in the **PrimeTerminal** web clip within an external browser, use the context menu **Open page in external browser**.



Browser standards for navigation, such as reloading a page or navigating back or forth, are also supported. The context menu also offers **PrimeTerminal** standard workflows such as copying or printing the clip, changing its title or undocking it.

## 5.2 New version: XLPort 1.8 (PrimeTerminal Professional Advisor/Asset Manager (Europe): all, PrimeTerminal Professional Basic: subscription only)

**XLPort** 1.8.18 is now available via [http://mdgtools.mdgms.com/files/xlport/xlport\\_1-8.msi](http://mdgtools.mdgms.com/files/xlport/xlport_1-8.msi) (32bit) and [http://mdgtools.mdgms.com/files/xlport/xlport\\_1-8\\_x64.msi](http://mdgtools.mdgms.com/files/xlport/xlport_1-8_x64.msi) (64bit).

This version is a mandatory release - please upgrade your previous **XLPort** installation accordingly. For more information, please contact your Interactive Data account representative.

This chapter outlines all changes compared to **XLPort** 1.7.

### 5.2.1 Functional improvements

#### 5.2.1.1 XLPortHistory

- **Recalculation behavior**  
On workbook opening, the recalculation of the function **XLPortHistory** is automatically triggered. In conjunction with the new relative **START** and **END** date parameterization (see below), this allows, for example to retrieve “rolling” histories, that are automatically updating on workbook opening.
- **Date data fields’ results are now retrieved as numbers**  
Date data fields’ results are now retrieved as numbers instead of text, to allow user-specific formatting, sorting, charts in Excel etc.
- **New parameterization to allow “rolling” START and END date**  
A relative **START** and **END** date parameterization is now possible to allow rolling histories, to always retrieve, for example, the previous working day’s data.  
Examples:
  - START:-1D
  - START:-1W
  - START:-3W END:-2W
  - START:-1M
  - START:-1Y

The new **XLPort** Data Dictionary, which is also accessible from the new ribbon style menu (see below), provides examples for the options parameterization of the function **XLPortHistory**.

## 5.2.1.2 Quote History Wizard: various enhancements for parameterization

The **Quote History** wizard dialog has been enhanced to cover all combinations of the options parameterization.

Option	Parameter	Default
Frequency	FRQ:D for daily frequency FRQ:W for weekly frequency FRQ:M for monthly frequency	FRQ:D
Start Date	START:	no default
End Date	END:	current date when the user enters the formula or triggers the recalculation
Number of rows returned	ROWS:	ROWS:250 with FRQ:D ROWS:52 with FRQ:W ROWS:12 with FRQ:M Please note that only the rows required are filled. If more rows are parameterized than required, they are not allocated or filled.
Sorting	SORT:ASC for ascending order SORT:DESC for descending order	SORT:ASC

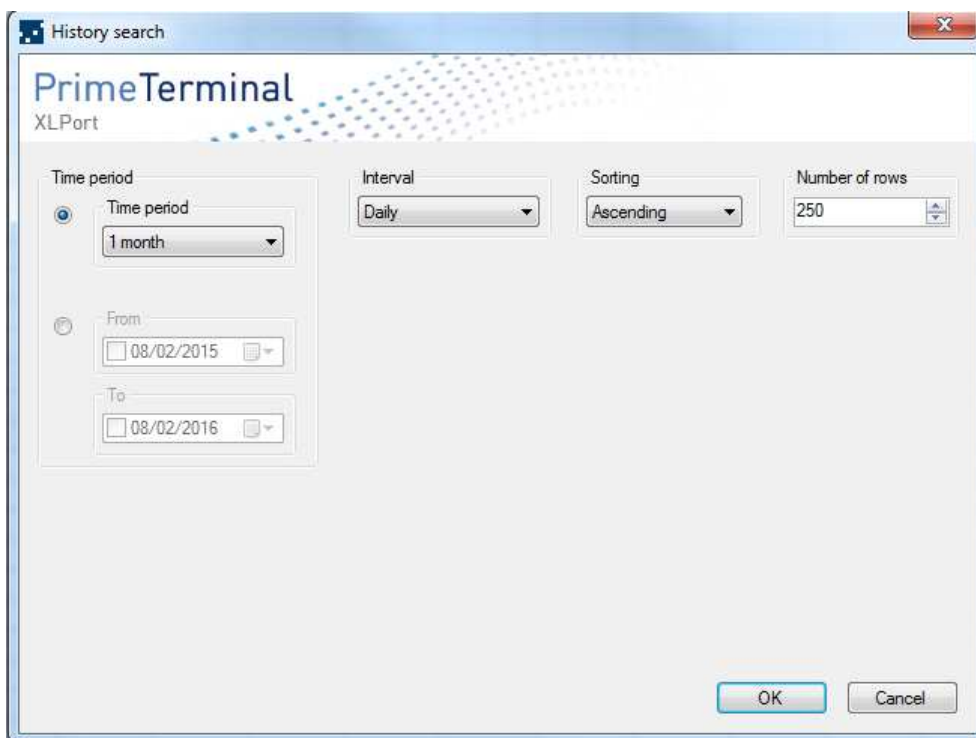
Enhancements as compared to version 1.7:

■ New GUI elements

- Sorting
- Number of rows
- From:
- To:

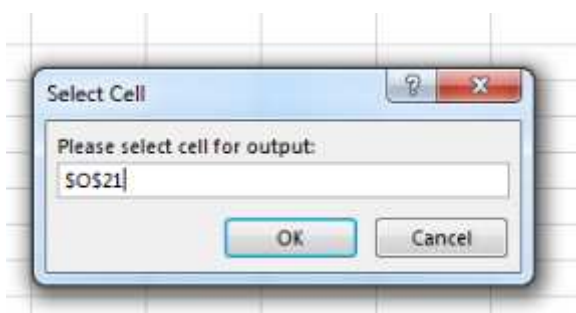
■ New behaviour

- If one of the preselected time periods is chosen (such as one month), the relative parameterization (see above) is used; a formula with Options parameterization such as =XLPortHistory(161766;"DATE\_FIRST,FIRST,LAST,HIGH,LOW,TOTAL\_VOLUME,TOTAL\_MONEY,NUMBER\_PRICES";"FRQ:D **START:-1M END:0M** ROWS:250 SORT:ASC") is generated.
- If one of the From: or To: dates is set and chosen, absolute START and/or END Options parameterization is used; a formula with Options parameterization such as =XLPortHistory(161766;"DATE\_FIRST,FIRST,LAST,HIGH,LOW,TOTAL\_VOLUME,TOTAL\_MONEY,NUMBER\_PRICES";"FRQ:D **START:20150112 END:20160119** ROWS:250 SORT:ASC")



#### 5.2.1.3 All wizards: Definition of output cell

All wizard dialogs have been enhanced to be capable of defining the output cell.



#### 5.2.1.4 RTD function: Date and time data fields' results are now retrieved as numbers

Date and time data fields' results are now retrieved as numbers instead of text to allow user-specific formatting, sorting, charts in Excel etc.

## 5.2.2 Content improvements and fixes

### 5.2.2.1 Alignment of data field and content availability to PrimeTerminal 3.7

The data field and content availability has been aligned to **PrimeTerminal 3.7**.

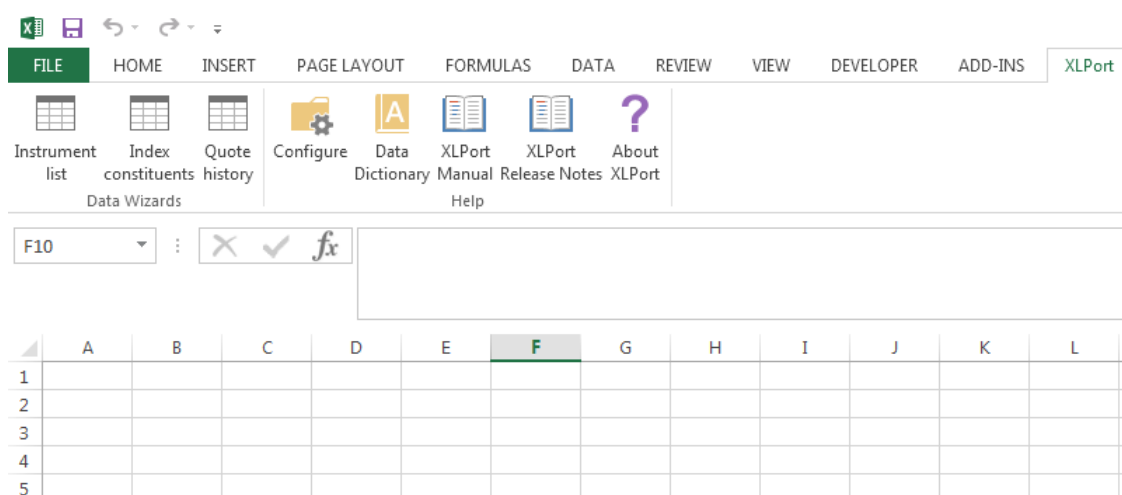
### 5.2.2.2 “Time” data fields have been removed from the available data fields for retrieval with XLPortHistory

**XLPortHistory** allows retrieving daily, weekly or monthly histories. Time data fields have been removed from the **Quote history** wizard dialog and predefined field templates, as they have no valid use case for data retrieval with **XLPortHistory**.

## 5.2.3 Usability improvements and user guidance

### 5.2.3.1 Ribbon instead of menu

A ribbon menu is now available for accessing the **XLPort** functionality, configuration and manuals.




### 5.2.3.2 Data Dictionary with fields reference and examples for parameterization of XLPortHistory

A new data dictionary workbook is now available via

[www.primeterminal-ms.com/www/download.html?file=xlportdatadict](http://www.primeterminal-ms.com/www/download.html?file=xlportdatadict).

The data dictionary workbook provides

- A comprehensive overview of the data fields than can be retrieved in XLPort. Please note that some data fields are subject to entitlement. For more information, please contact your Interactive Data account representative.
- Example data for each asset class (requires opening of the workbook with XLPort add-in loaded)
- Examples for the Options parameterization of the XLPortHistory function:

A B C D			
1	 <b>Data Dictionary for XLPort 1.8</b> Version 1.0 Interactive Data, Product Management EMEA Release date 04/11/2015 Status: Public		
2			
3			
4			
5			
6			
7			
8	<b>Data fields</b> for RTD General data Quote data Performance & Risk data Stocks data Warrants data Certificates data Bonds data Funds data Options data Futures data Index data OTC Data Services Data for XLPort-history		
9	<b>Data examples for various instrument types and data sources</b> Stock Index Bond ETF Fonds - Interactive Data Fonds - Morningstar Option Future Warrant Interest Rate - OTCD C&E - OTCD		
10	Discount Reverse Convertible Participation Knock Out Airbag Bonus Outperformance Protection Sprint Other		
11	Please note that field and data availability is subject to individual user entitlement. Export restrictions apply for some data sources. Please contact your Interactive Data account representative for more information.		
12	<b>Data fields for RTD</b>		
13	Group	Attribute Code	EN Label/Hierarchy in wizard
14	General data	NAME_SECURITY	Set general data -> "Name"
15		ISIN	Set general data -> "ISIN"
16		NSIN	Set general data -> "Local ID"
17			Set general data -> "Symbol"

### 5.2.3.3 Links to XLPort User Manual and Release Notes

Links to the [User Manual](#) and [Release Notes](#) files are now also available from the XLPort ribbon.

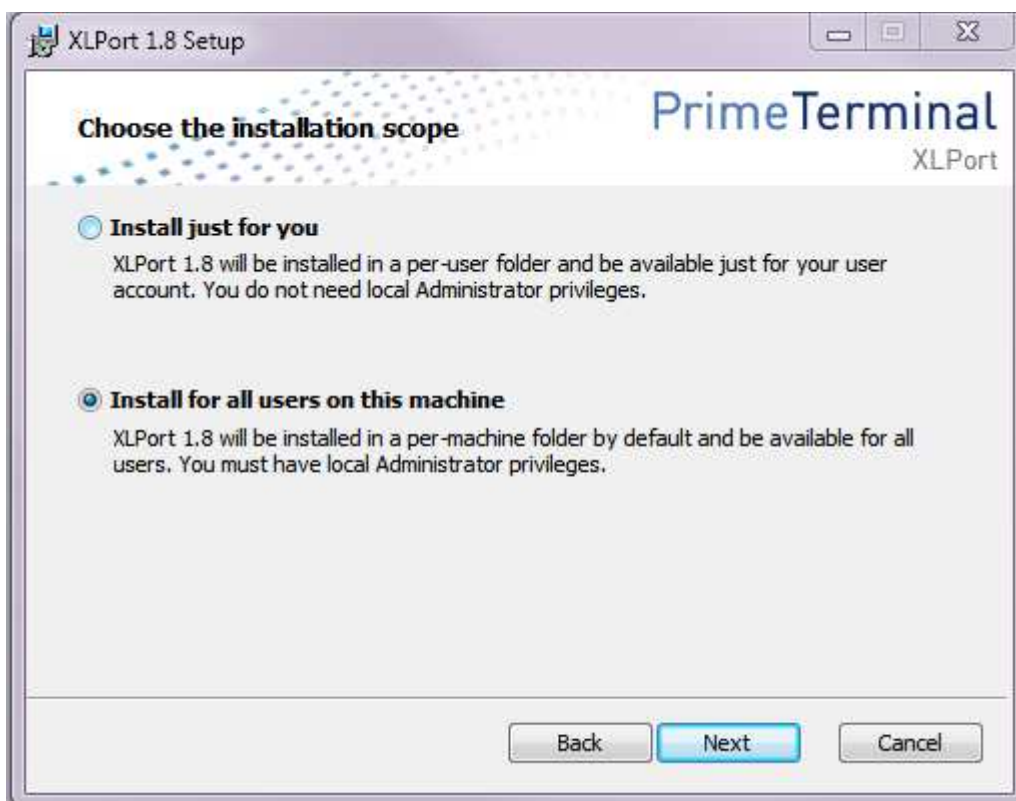
## 5.2.4 Technical improvements

### 5.2.4.1 PrimeTerminal <-> XLPort

- On connection loss of **PrimeTerminal**, the user is now alerted. On reconnection, **XLPort** also reconnects automatically.
- The server configuration is shared between **XLPort** and **PrimeTerminal**.
- **XLPort** uses the time zone settings of **PrimeTerminal** that can be adjusted under **MySettings** → **General** → **Localization**.

### 5.2.4.2 Installation

- A newer version of **XLPort** can be installed over an older version without necessity to de-install the previous version.
- The user is warned when trying to install an older version over a newer version of **XLPort** which is already installed on the target machine.
- Installation is now also possible without Administrator privileges



#### 5.2.4.3 Support matrix for XLPort

**XLPort** is now supported by the following Microsoft Office Excel and Microsoft Windows combinations:

			Microsoft Office Excel									
			2003	2007	2010	2013	2016					
			32/64 bit	32	32	32	64	32	64	32	64	
Microsoft Windows	XP	32	x	x	x		x		x			
		64	x	x	x		x		x			
	7	32	x	x	x		x		x			
		64	x	x	x	x	x	x	x	x	x	
	8	32	x	x	x		x		x			
		64	x	x	x	x	x	x	x	x	x	
	10	32	x	x	x		x		x			
		64	x	x	x	x	x	x	x	x	x	

Notes:

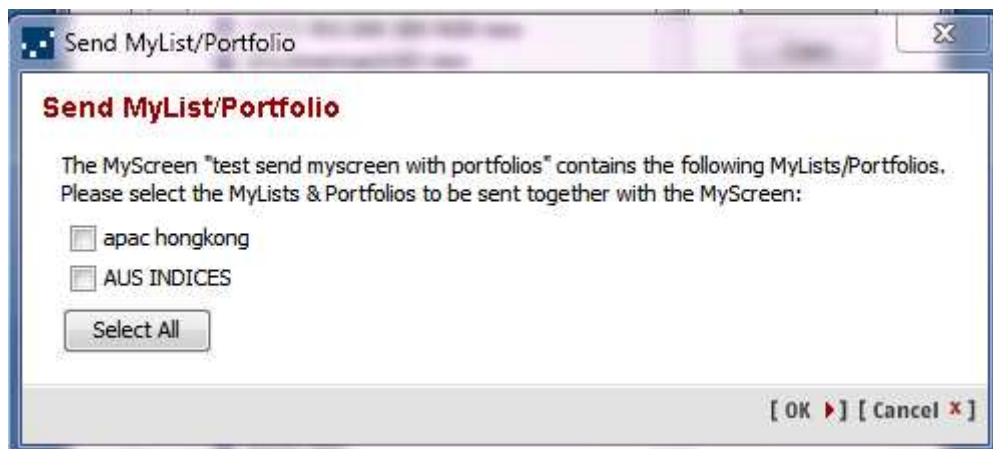
- Cells marked with red are impossible scenarios, since 64-bit Microsoft Office Excel can be installed on only 64-bit Windows.
- Windows 10 requires installation of .NET 2.0.
- **XLPort** 1.8.18 is available via

- [http://mdgtools.mdgms.com/files/xlport/xlport\\_1-8.msi](http://mdgtools.mdgms.com/files/xlport/xlport_1-8.msi) (32 bit)
- and
- [http://mdgtools.mdgms.com/files/xlport/xlport\\_1-8\\_x64.msi](http://mdgtools.mdgms.com/files/xlport/xlport_1-8_x64.msi) (64 bit).

## 5.3 Enhanced: Collaboration - Sending MyLists/Portfolios together with MyScreen (all)

### Behavior release 3.7:

When a user sends a **MyScreen** containing **MyLists/Portfolios** to one or more other users, he is asked whether he would like to send also the **MyLists/Portfolios** saved in a **MyScreen**. The **MyLists/Portfolios** to be sent can then be selected.

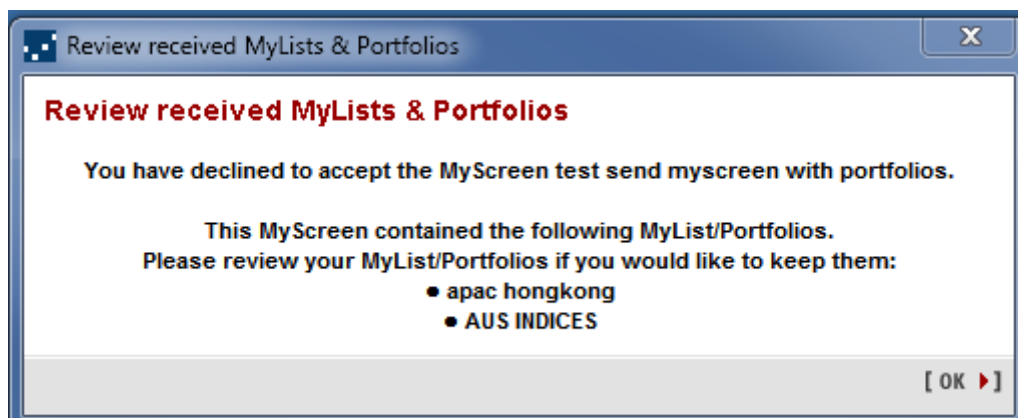


This workflow combines the existing workflows for sending **MyScreens** and **MyLists/Portfolios**, without detaching the link between the **MyScreen** and the **MyLists/Portfolios** saved in the **MyScreen**. If the user chooses not to send any **MyList/Portfolio**, the release 3.6 workflow is used.

### Behavior release 3.6:

When a **MyScreen** containing **MyLists/Portfolios** was sent to one or more other users, only **List clip/Performance Chart/Ticker clip/News clip/Event Calendar** clips with the list of notations had been transmitted, without sending and linking to the actual **MyLists/Portfolios**.

If the recipient declines acceptance of the screen, he is informed that the screen contains **MyList/Portfolios** that he might want to review.



If the recipient user's **MyLists/Portfolios** already contain **MyLists/Portfolios** with the same name, they are not overwritten by the **MyScreen//MyLists/Portfolios** combination received. The existing **MyLists/Portfolios** are used. Basically the recipient's **MyScreen** definition "knows" only about the structure of the **MyScreen** on recipient side, ie. at which position a **MyList/Portfolio** is displayed, but is agnostic towards the content (notations, transactions/positions) of the **MyList/Portfolio**.

## 5.4 Predefined Markets screens: Chart clip (classic) replaced with Chart clip in all predefined Markets screens (all)

**Chart clip (classic)** has been replaced by **Chart clip** in all predefined **Markets** screens. Personal **MyScreens** have not been migrated, users can do this individually.

Please note that as of from version 3.9, all menus for opening **Chart clip (Classic)** will be removed. **Chart clip (Classic)** will still remain in **PrimeTerminal** for compatibility reasons and can still be accessed if saved as part of a **MyScreen**.

## 5.5 Enhanced: Chart clip (all)

Various enhancements have been implemented for the **Chart clip**, for even faster, more efficient and convenient use of the clip.

### 5.5.1 Quick bar visibility

To save space, the quick bar is now only visible when the clip is selected. The quick bar becomes visible on chart selection and is automatically hidden on de-selection.




## 5.5.2 Adding benchmarks

In addition to the existing workflow for adding benchmarks (cntrl & drag from another clip to the **Chart clip**), the user can now also directly use the clip search functionality in the **Chart clip** to add benchmarks.



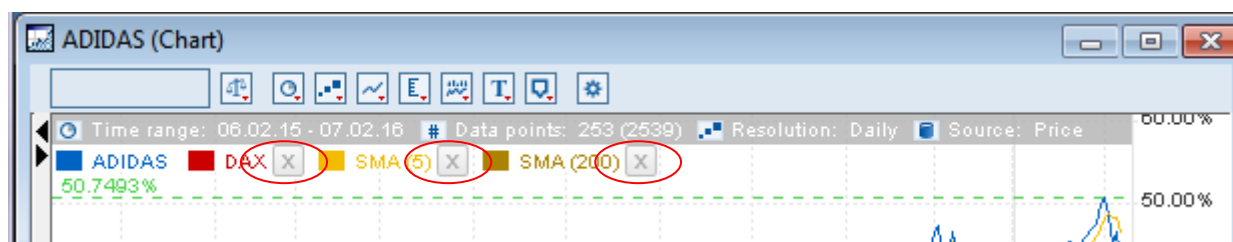
Two workflows are supported after entering the search term for clip search:

- Use the dropdown  and choose **Add benchmark**
- Use Cntrl & Enter to add the benchmark

As before, up to five benchmarks can be added.

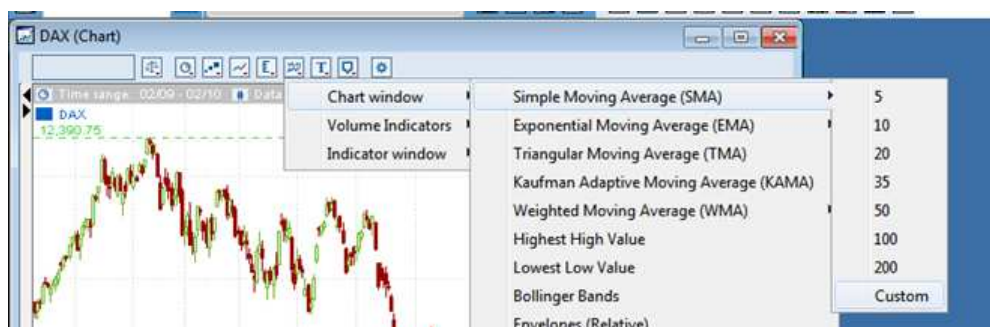
## 5.5.3 Deleting indicators and benchmarks from main chart

Indicators and benchmarks can now be deleted easier and faster from the main chart, just by using the “x” icon behind the indicator or benchmark.



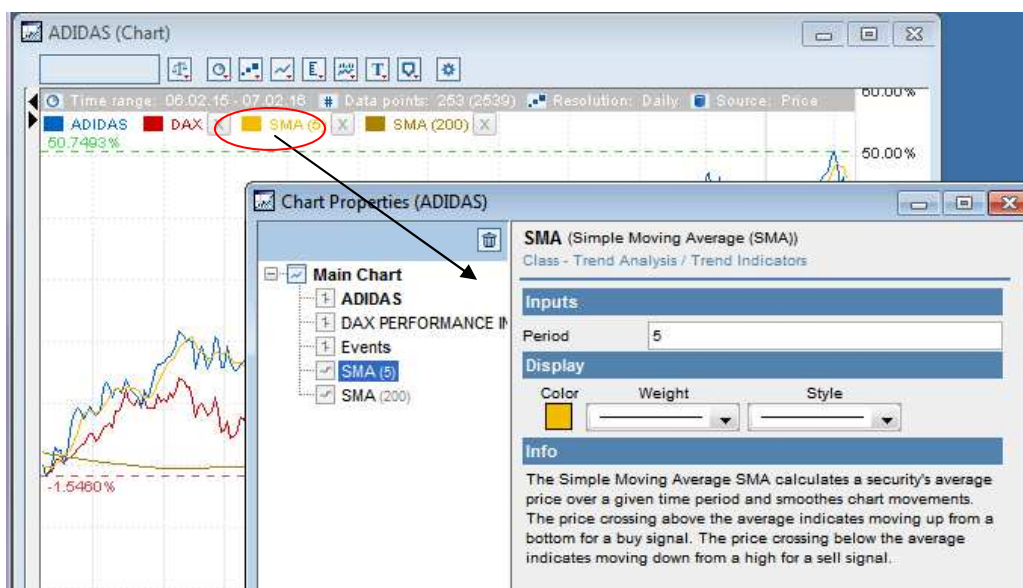
## 5.5.4 Definition of custom periods for the chart clip and indicator parameterization

The menu item **Custom** is now available for both time period and selected chart window indicators, such as SMA. Choosing **Custom**, the user is directly taken to the properties of either the main instrument or the indicator to define a custom time period.

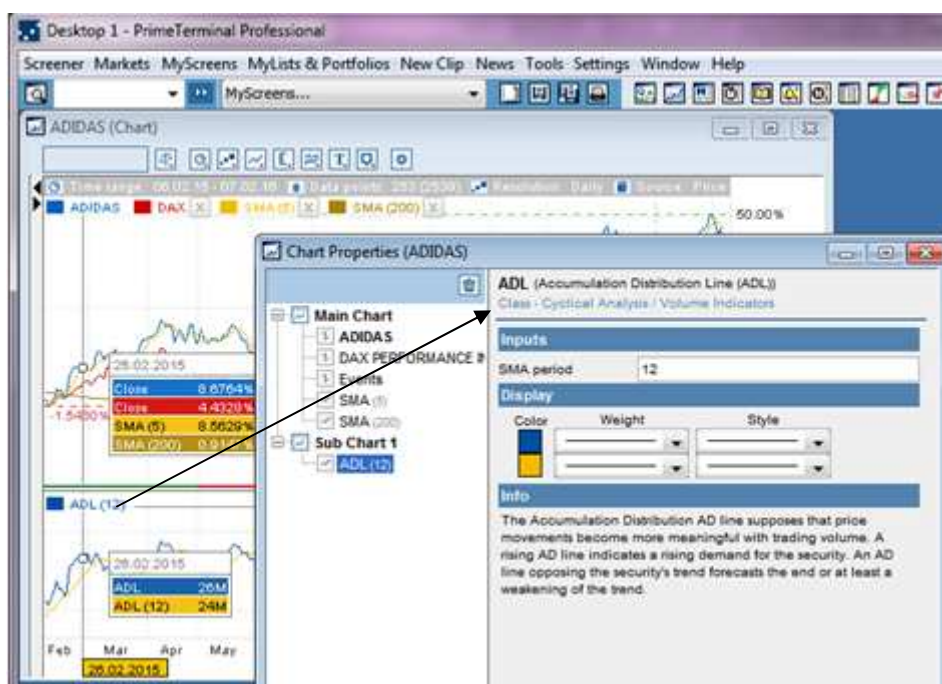


### 5.5.5 Easier navigation to the properties

Navigation to the properties is now much easier. For example: To directly select the properties for the SMA (5) overlay in the clip below, click on “SMA(5)”.

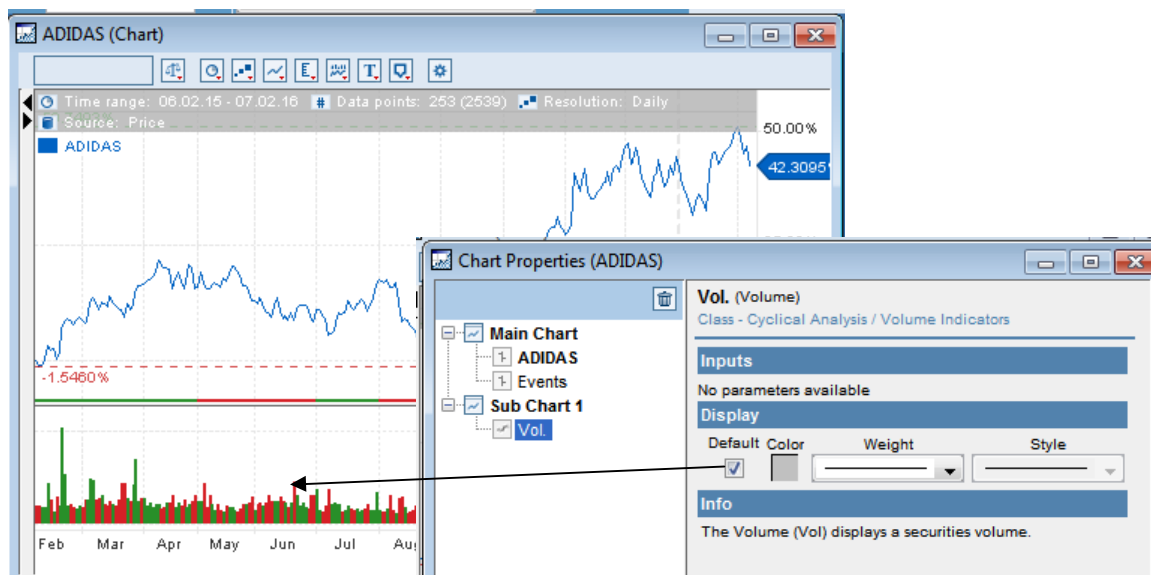


The same applies for the sub charts:



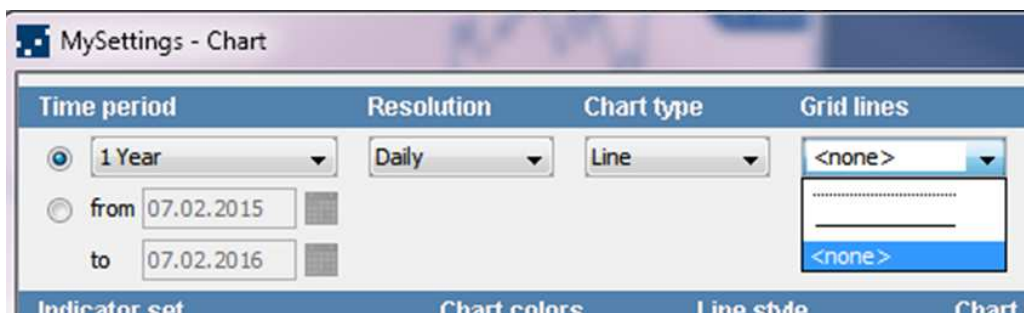
### 5.5.6 Coloured volume indicator

A coloured volume indicator is now available (red/green depending on the performance) in addition to the monochrome variant. The coloured indicator is the default.



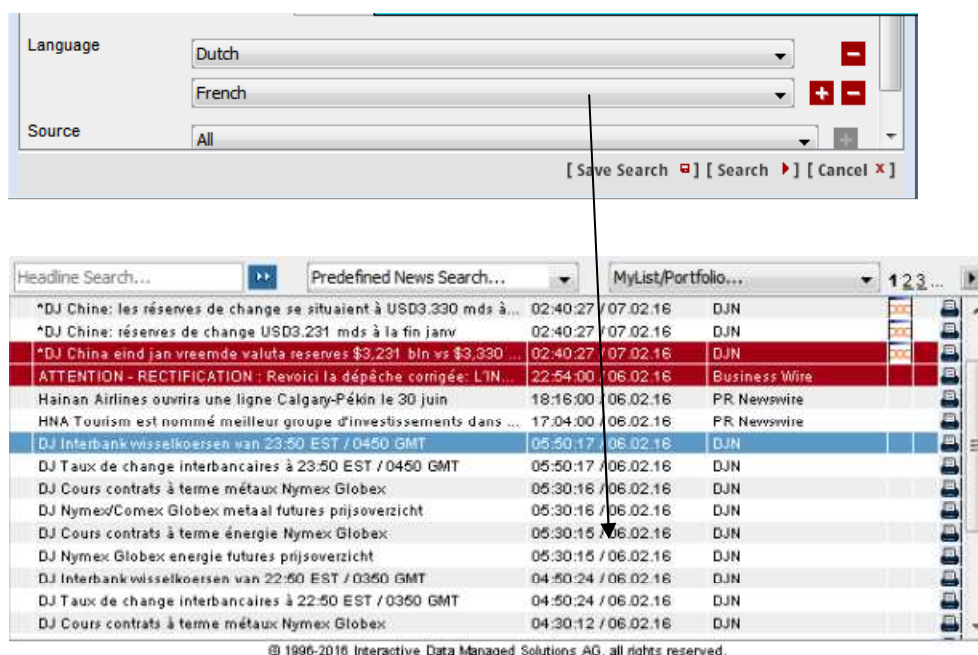
### 5.5.7 MySettings: Background grid style

Users can choose the background grid style (or none) for the chart background.



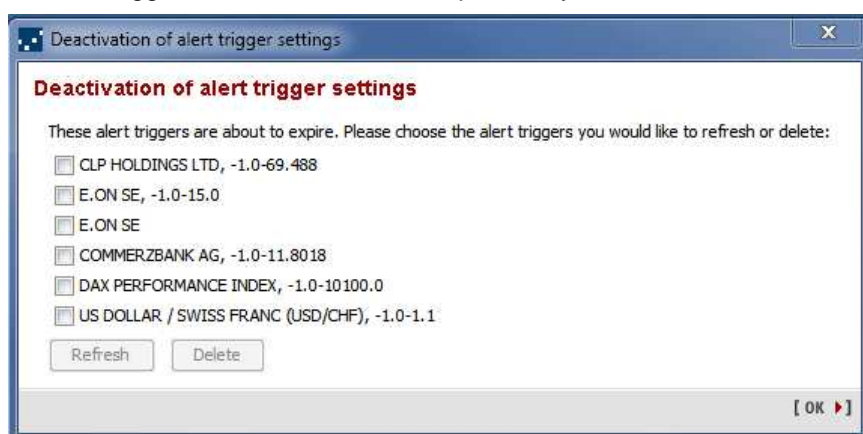
## 5.6 Enhanced: News search clip (all)

Multi-selection of languages is now available within the **News search** clip.



## 5.7 Enhanced: Alert clip - Notification about upcoming automatic deactivation of alerts

In order to extend the lifetime of alert triggers that are about to expire, the user is now informed accordingly on initial loading of **PrimeTerminal**. He can choose to extend the lifetime and reactivate the alert trigger, or to delete it if not required anymore.

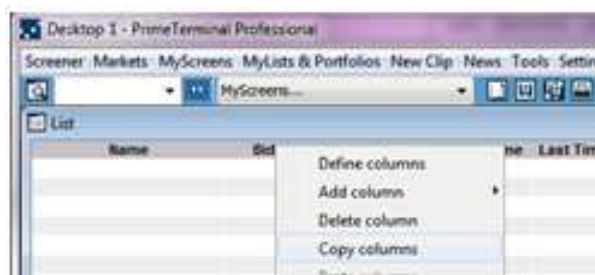


Background information: (technical backend change in May 2015).

- The lifetime for new alert triggers has been set to one year
- The lifetime for existing (existing as of May 2015) alert triggers has been set to five years.

## 5.8 Enhanced: List clip: Copy columns - Paste columns

For quick copying of a columns layout from one List clip to another, the new context menus **Copy columns** and **Paste columns** have been added.



## 5.9 New: Full screen mode

**Full Screen** mode is now available. To toggle between **Full Screen** and previous display, Strg-F11 can be used. Alternatively, to switch to **Full Screen** mode, the menu **Window** → **Full Screen** can be used.

## 6 Technical

### 6.1 Loading MyLists/Portfolios on initial loading of PrimeTerminal (all)

**MyLists/Portfolios** saved by the user are loaded when starting **PrimeTerminal**. With version 3.7, the initial loading time of **MyLists/Portfolios**, and consequently the loading time of **PrimeTerminal**, is much shorter, depending on the number of **MyLists/Portfolios** saved by the user.

### 6.2 Supported environment (all)

**PrimeTerminal** (incl. DDE) is supported up to Microsoft® Office 2016 32/64 bit and Microsoft® Windows 10 32/64 bit. For **XLPort**'s supported environments, please refer to the chapter 5.2.4.3. The [Technical Guide](#) has been updated to reflect this change.

### 6.3 Supported JRE version (all)

JRE version 1.7 update 6 or higher is required to run **PrimeTerminal**. The [Technical Guide](#) and the [Application Tester](#) have been updated to reflect this change.

## 7 Service and Documentation

- The [Technical Guide](#) has been updated.
- The [Application Tester](#) has been updated.
- The [content lists](#) have been updated, also in the light of the **PrimeTerminal** Asset Manager introduction.
- [Release Notes](#) for **XLPort** version 1.8 have been provided. The [XLPort User Manual](#) will be updated in due course.
- An **XLPort** version 1.8 [fields data dictionary](#) is now available.

## 8 Fixes and translations quality assurance (all)

The following fixes have been implemented:

Asset class, clip or functionality	Description	Ticket #
Funds / Screener	The funds screener is now only available if at least one of the funds databases from Interactive Data, Fida, Morningstar or Cote Alpha is entitled. ETFs can be found via the ETF screener (subscription only)	917975
Stocks / Analyst report	The section contributors has been removed, as this content is not updated by Factset anymore (subscription only)	923525
Technical	JNLP file shows warning and exception in Java console with Java 8 Update 60.	966803
Chart clip	Lock broadcast setting of a Chart clip has not been in a MyScreen.	970613
Chart clip	Intraday ticks for different days are moved apart for notation 193741.	973469
Chart clip	For some ID_Notations it was not always possible to specify a custom time period, some dates have been defaulting to a day before or after, even though there was data for the user-defined date.	977301
Chart clip	Intraday OHLC values wrongly painted for new updates (resolution 1min, bar chart)	986931
Chart clip	Optimizing memory usage, cache is now fully released on clip close.	1105523
Chart clip	Volume indicator grows to cover entire chart clip on maximizing and restoring PrimeTerminal application a couple of times.	1106453
All Markets clip	If a MyColumns definition was assigned as default in MySettings to the All Markets clip, and this MyColumns definition was deleted, a stack overflow occurred.	977973
All clips	Upon start of PrimeTerminal, clips such as chart clip (saved in a startup screen) took 5+ seconds to open with progress bar shown during that time.	978571
Interactive Charts	Quick Search Interactive Charts: Show contributor and exchange in one result column.	1109905
Chart clip	Translations quality assurance: DE, ES, IT in MySettings	736269
Alert clip	Translations quality assurance: DE, ES, FR, IT, ES	746887
Pinned Symbols	Translations quality assurance: DE	746887
Various	Translations quality assurance: EN, DE, ES, FR, IT, ES	900481
All Markets	Translations quality assurance: FR	1108709